

Taylor County, Iowa
 Iowa South Zone (1402)
 Horiz. Datum: **NAD83(NA2011)**
 Vert. Datum: NAVD 1988
 US Survey Feet
2013

Point Name: **1015**

Designation: 2009-015 Taylor Co GPS Control Pt (Set by DCI in 2009)

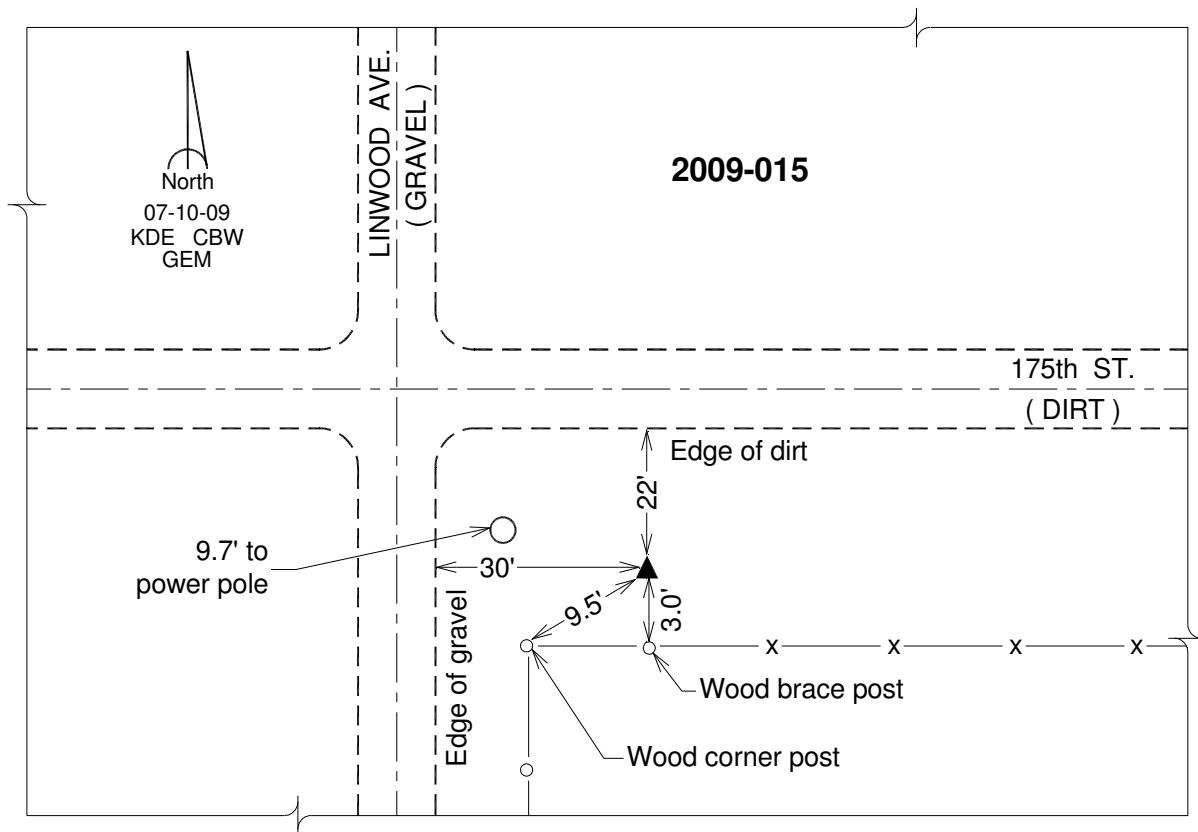
Northing: **290764.97sft** Easting: **1305506.14sft**

Orthometric Height: **1269.29sft** Ellipsoid Height: **1167.66sft** **Geoid12A**

Latitude: **N40°47'30.07660"** Longitude: **W94°42'34.44266"**

Mapping Angle: **-0°47'48"** Combination Scale Factor: **0.999918005**

Monument Type: Berntsen 3/4" Top Security Rod Monument with a 2-1/2" dia. domed survey cap and permanent magnet encased in a white PVC pipe with a NGS style alum. access cover.



This document was prepared by DCI on 04-17-2013 for use by Taylor County, Iowa.