

**Taylor County, Iowa**  
 Iowa South Zone (1402)  
 Horiz. Datum: **NAD83(NA2011)**  
 Vert. Datum: NAVD 1988  
 US Survey Feet  
**2013**

Point Name: **1020**

**Designation:** 2009-020 Taylor Co GPS Control Pt (Set by DCI in 2009)

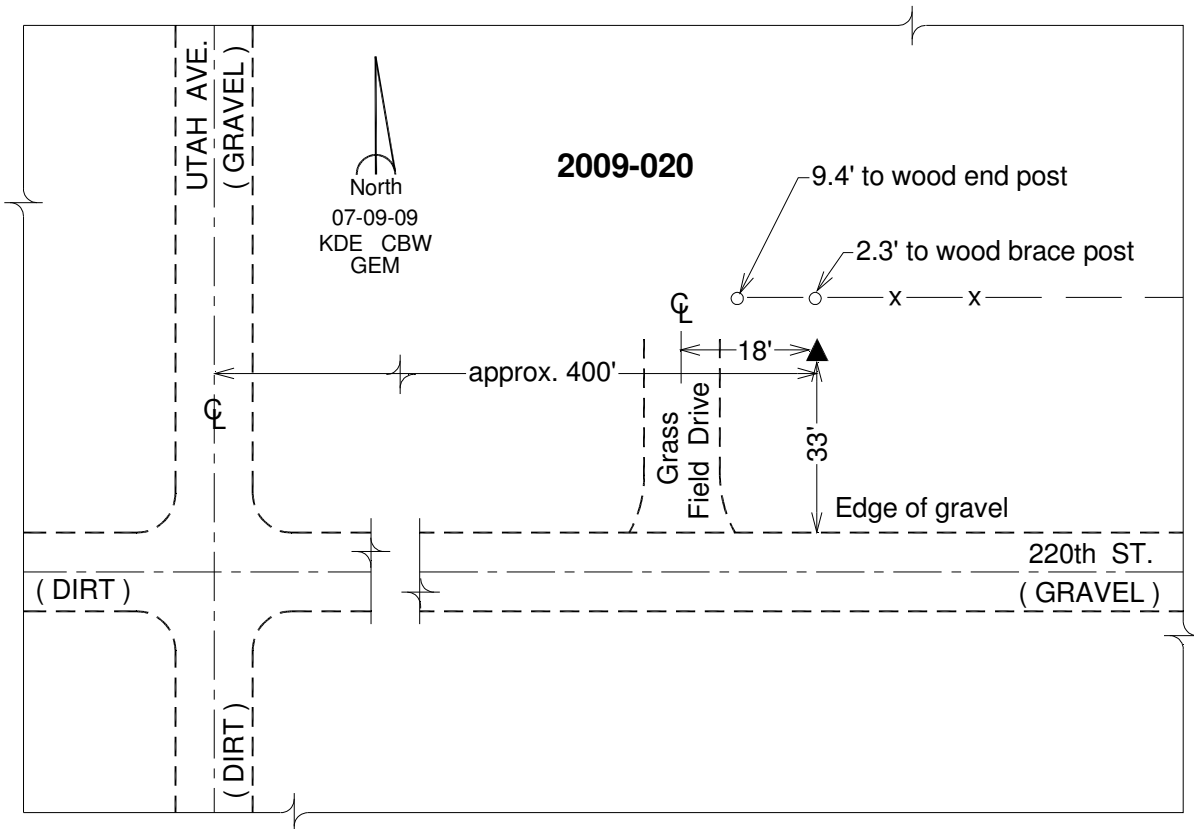
Northing: **266355.05**sft    Easting: **1350558.97**sft

Orthometric Height: **1253.36**sft    Ellipsoid Height: **1151.29**sft                      **Geoid12A**

Latitude: **N40°43'34.66737"**                      Longitude: **W94°32'44.91969"**

Mapping Angle: **-0°41'20"**                      Combination Scale Factor: **0.999927524**

**Monument Type:** Berntsen 3/4" Top Security Rod Monument with a 2-1/2" dia. domed survey cap and permanent magnet encased in a white PVC pipe with a NGS style alum. access cover.



*This document was prepared by DCI on 04-17-2013 for use by Taylor County, Iowa.*