

Taylor County, Iowa
Iowa South Zone (1402)
Horiz. Datum: **NAD83(NA2011)**
Vert. Datum: NAVD 1988
US Survey Feet
2013

Point Name: **1021**

Designation: 2009-021 Taylor Co GPS Control Pt (Set by DCI in 2009)

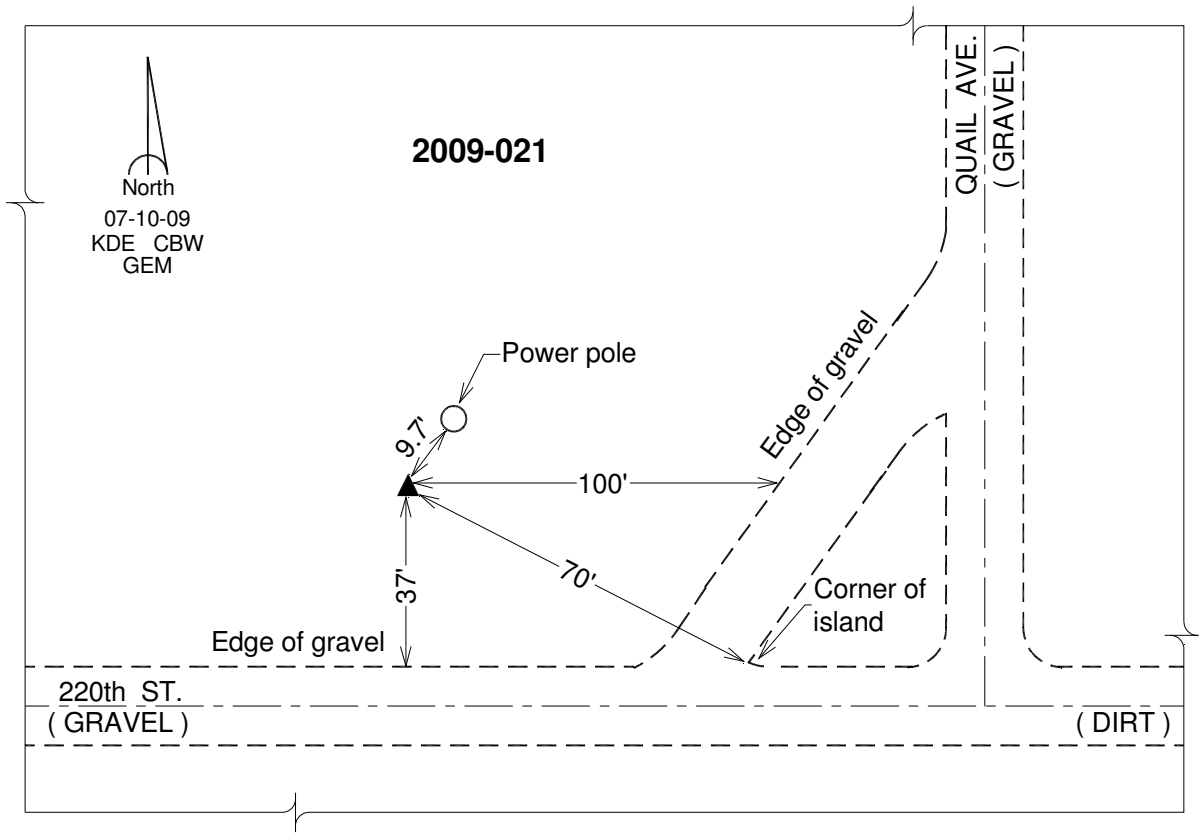
Northing: **266850.21**sft Easting: **1327398.57**sft

Orthometric Height: **1169.76**sft Ellipsoid Height: **1067.79**sft **Geoid12A**

Latitude: **N40°43'36.69835"** Longitude: **W94°37'45.79760"**

Mapping Angle: **-0°44'38"** Combination Scale Factor: **0.999931427**

Monument Type: Berntsen 3/4" Top Security Rod Monument with a 2-1/2" dia. domed survey cap and permanent magnet encased in a white PVC pipe with a NGS style alum. access cover.



This document was prepared by DCI on 04-17-2013 for use by Taylor County, Iowa.