

**Taylor County, Iowa**  
 Iowa South Zone (1402)  
 Horiz. Datum: **NAD83(NA2011)**  
 Vert. Datum: NAVD 1988  
 US Survey Feet  
**2013**

Point Name: **1022**

**Designation:** 2009-022 Taylor Co GPS Control Pt (Set by DCI in 2009)

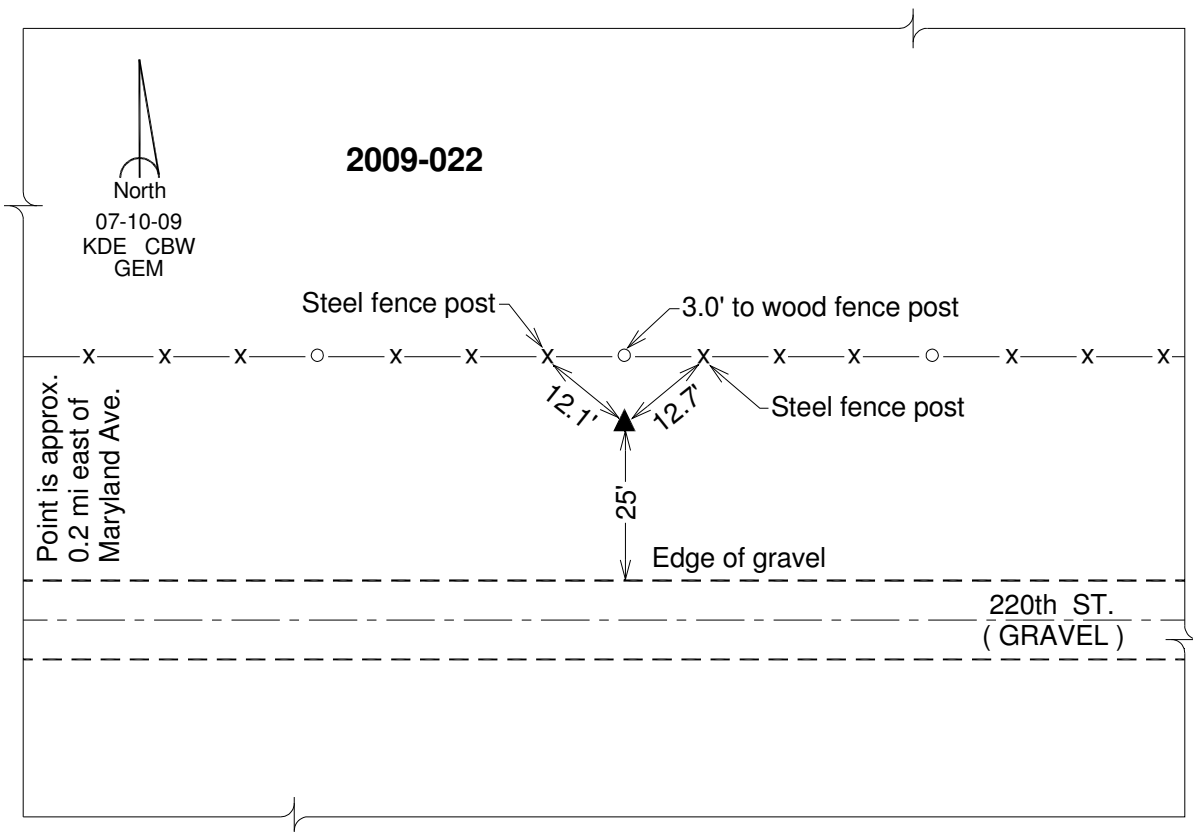
Northing: **267143.27sft**    Easting: **1307239.78sft**

Orthometric Height: **1247.13sft**    Ellipsoid Height: **1145.22sft**                      **Geoid12A**

Latitude: **N40°43'36.92433"**                      Longitude: **W94°42'07.66083"**

Mapping Angle: **-0°47'31"**                      Combination Scale Factor: **0.999927724**

**Monument Type:** Berntsen 3/4" Top Security Rod Monument with a 2-1/2" dia. domed survey cap and permanent magnet encased in a white PVC pipe with a NGS style alum. access cover.



*This document was prepared by DCI on 04-17-2013 for use by Taylor County, Iowa.*