

Taylor County, Iowa
 Iowa South Zone (1402)
 Horiz. Datum: **NAD83(NA2011)**
 Vert. Datum: NAVD 1988
 US Survey Feet
2013

Point Name: **1024**

Designation: 2009-024 Taylor Co GPS Control Pt (Set by DCI in 2009)

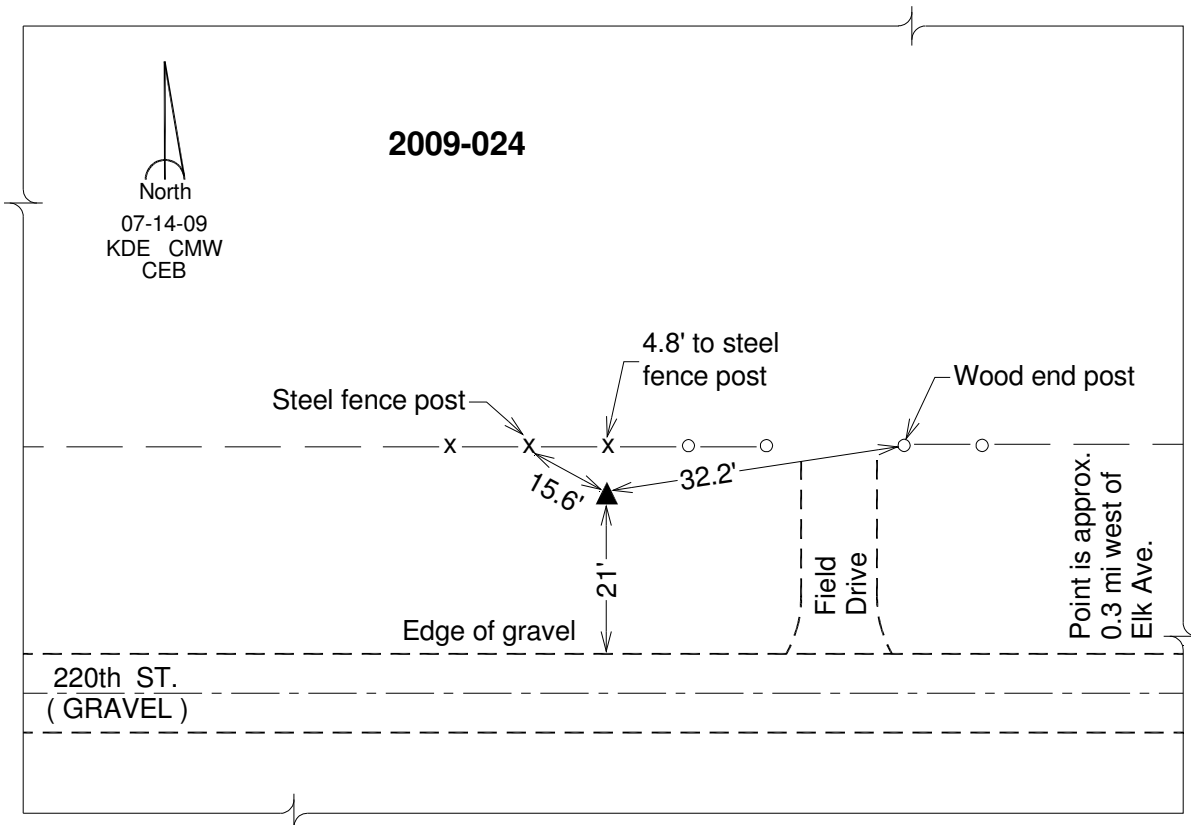
Northing: **267962.51**sft Easting: **1263914.04**sft

Orthometric Height: **1147.08**sft Ellipsoid Height: **1045.22**sft **Geoid12A**

Latitude: **N40°43'38.71747"** Longitude: **W94°51'30.50218"**

Mapping Angle: **-0°53'41"** Combination Scale Factor: **0.999932423**

Monument Type: Berntsen 3/4" Top Security Rod Monument with a 2-1/2" dia. domed survey cap and permanent magnet encased in a white PVC pipe with a NGS style alum. access cover.



This document was prepared by DCI on 04-17-2013 for use by Taylor County, Iowa.