

**Taylor County, Iowa**  
 Iowa South Zone (1402)  
 Horiz. Datum: **NAD83(NA2011)**  
 Vert. Datum: NAVD 1988  
 US Survey Feet  
**2013**

Point Name: **1025**

**Designation:** 2009-025 Taylor Co GPS Control Pt (Set by DCI in 2009)

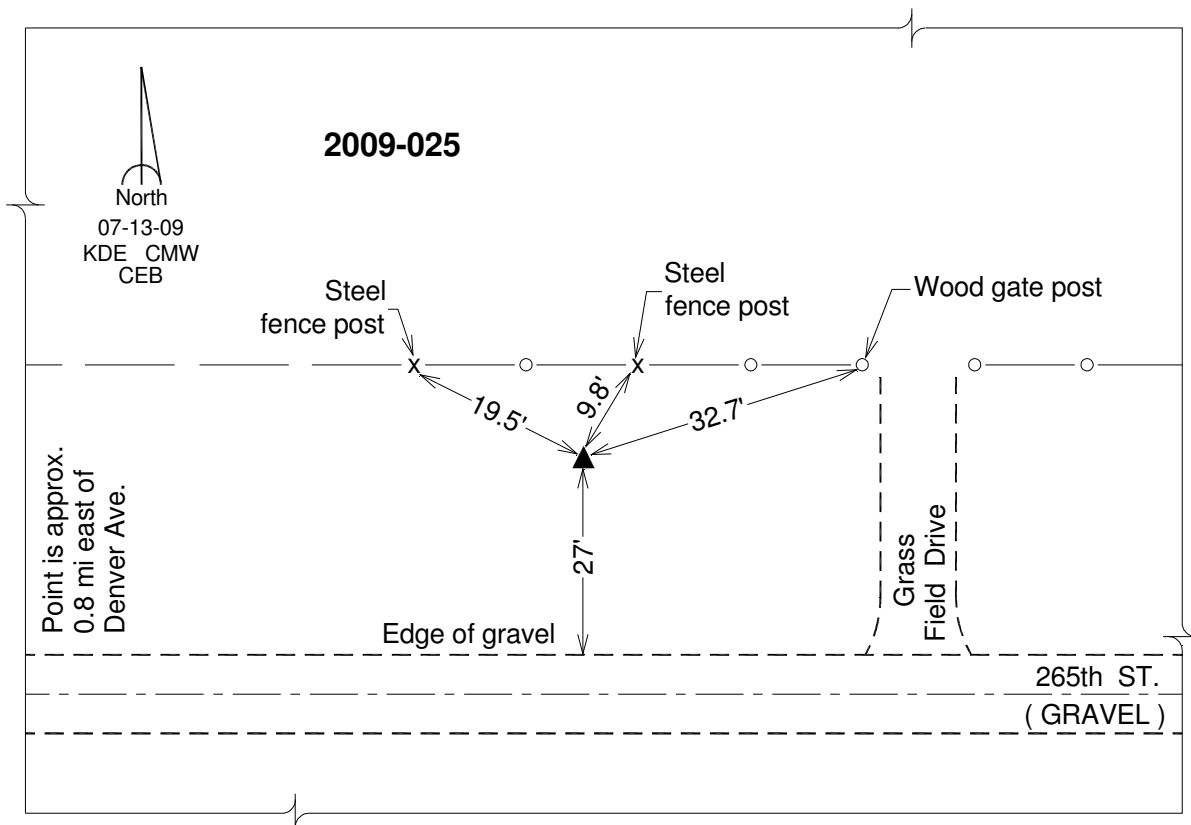
Northing: **247445.42sft**    Easting: **1262939.71sft**

Orthometric Height: **1130.08sft**    Ellipsoid Height: **1028.02sft**                      **Geoid12A**

Latitude: **N40°40'15.85671"**                      Longitude: **W94°51'38.98695"**

Mapping Angle: **-0°53'47"**                      Combination Scale Factor: **0.999941788**

**Monument Type:** Berntsen 3/4" Top Security Rod Monument with a 2-1/2" dia. domed survey cap and permanent magnet encased in a white PVC pipe with a NGS style alum. access cover.



*This document was prepared by DCI on 04-17-2013 for use by Taylor County, Iowa.*