

Taylor County, Iowa
Iowa South Zone (1402)
Horiz. Datum: **NAD83(NA2011)**
Vert. Datum: NAVD 1988
US Survey Feet
2013

Point Name: **1026**

Designation: 2009-026 Taylor Co GPS Control Pt (Set by DCI in 2009)

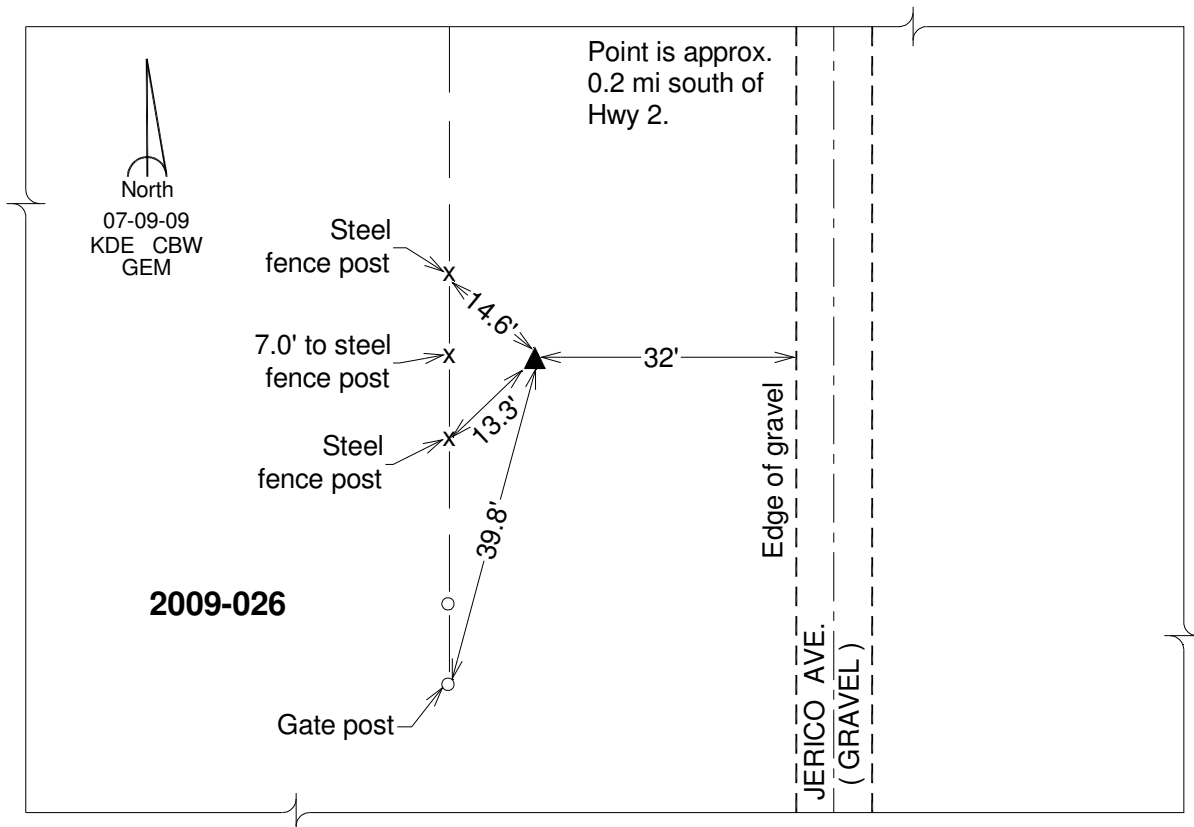
Northing: **247957.40sft** Easting: **1289895.43sft**

Orthometric Height: **1207.70sft** Ellipsoid Height: **1105.57sft** **Geoid12A**

Latitude: **N40°40'24.93335"** Longitude: **W94°45'49.29676"**

Mapping Angle: **-0°49'57"** Combination Scale Factor: **0.999937686**

Monument Type: Berntsen 3/4" Top Security Rod Monument with a 2-1/2" dia. domed survey cap and permanent magnet encased in a white PVC pipe with a NGS style alum. access cover.



This document was prepared by DCI on 04-17-2013 for use by Taylor County, Iowa.