

**Taylor County, Iowa**  
Iowa South Zone (1402)  
Horiz. Datum: **NAD83(NA2011)**  
Vert. Datum: NAVD 1988  
US Survey Feet  
**2013**

Point Name: **1028**

**Designation:** 2009-028 Taylor Co GPS Control Pt (Set by DCI in 2009)

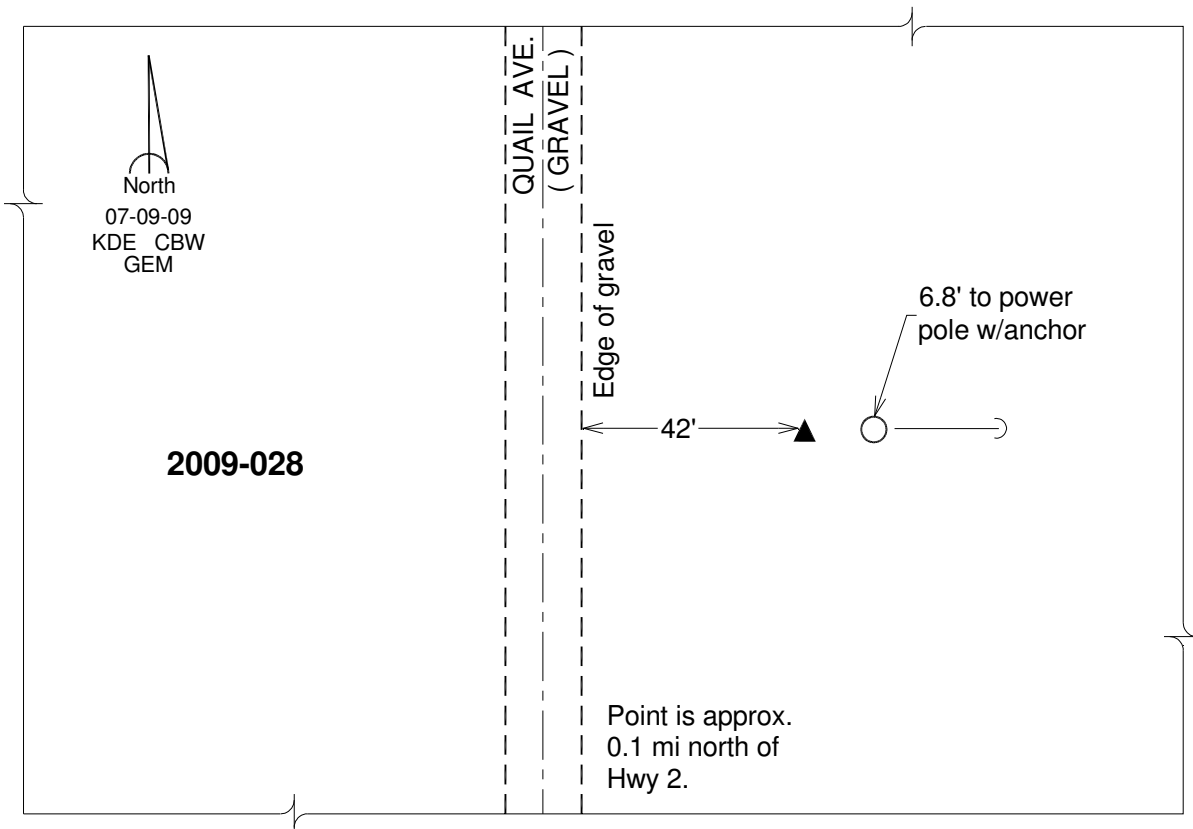
Northing: **248119.09**sft Easting: **1328902.54**sft

Orthometric Height: **1220.11**sft Ellipsoid Height: **1117.87**sft **Geoid12A**

Latitude: **N40°40'31.81892"** Longitude: **W94°37'23.12358"**

Mapping Angle: **-0°44'23"** Combination Scale Factor: **0.999936795**

**Monument Type:** Berntsen 3/4" Top Security Rod Monument with a 2-1/2" dia. domed survey cap and permanent magnet encased in a white PVC pipe with a NGS style alum. access cover.



*This document was prepared by DCI on 04-17-2013 for use by Taylor County, Iowa.*