

Taylor County, Iowa
 Iowa South Zone (1402)
 Horiz. Datum: **NAD83(NA2011)**
 Vert. Datum: NAVD 1988
 US Survey Feet
2013

Point Name: **1031**

Designation: 2009-031 Taylor Co GPS Control Pt (Set by DCI in 2009)

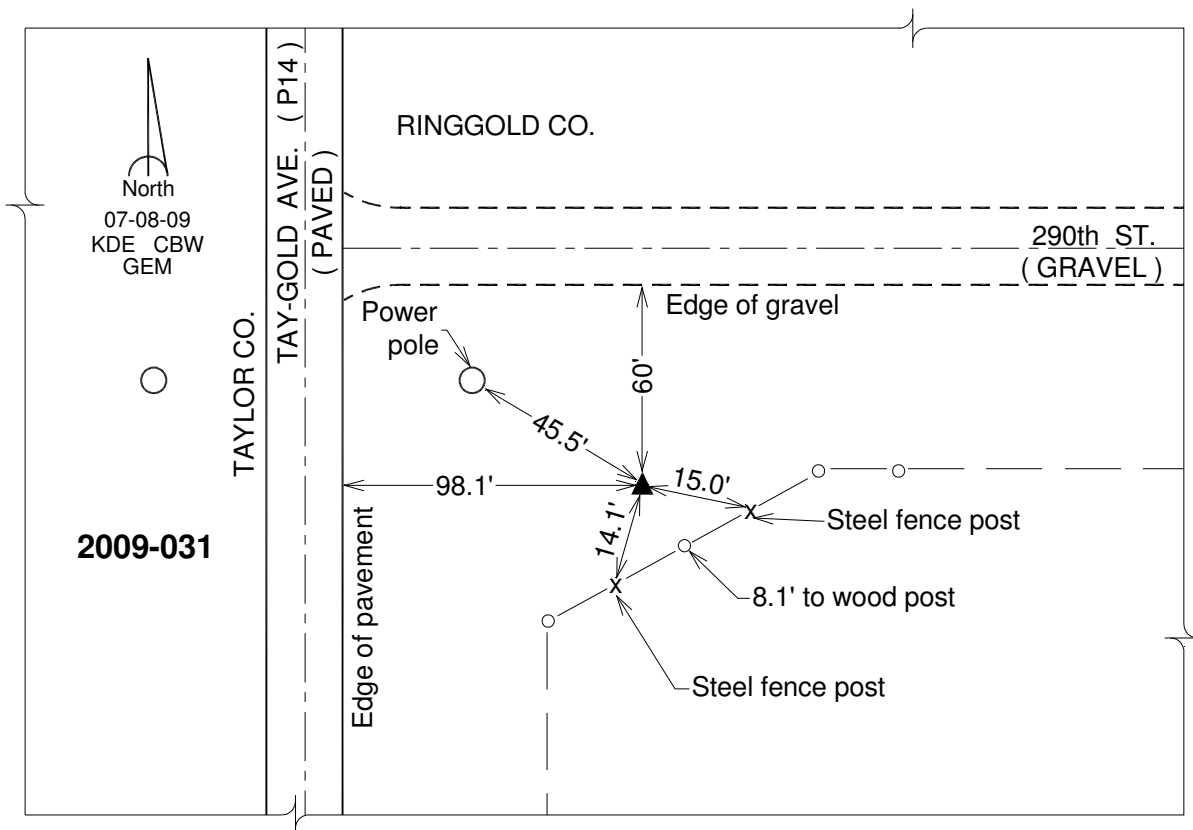
Northing: **229164.25**sft Easting: **1370873.53**sft

Orthometric Height: **1154.51**sft Ellipsoid Height: **1051.71**sft **Geoid12A**

Latitude: **N40°37'29.52645"** Longitude: **W94°28'15.68706"**

Mapping Angle: **-0°38'23"** Combination Scale Factor: **0.999948377**

Monument Type: Berntsen 3/4" Top Security Rod Monument with a 2-1/2" dia. domed survey cap and permanent magnet encased in a white PVC pipe with a NGS style alum. access cover.



This document was prepared by DCI on 04-17-2013 for use by Taylor County, Iowa.