

Taylor County, Iowa
Iowa South Zone (1402)
Horiz. Datum: **NAD83(NA2011)**
Vert. Datum: NAVD 1988
US Survey Feet
2013

Point Name: **1033**

Designation: 2009-033 Taylor Co GPS Control Pt (Set by DCI in 2009)

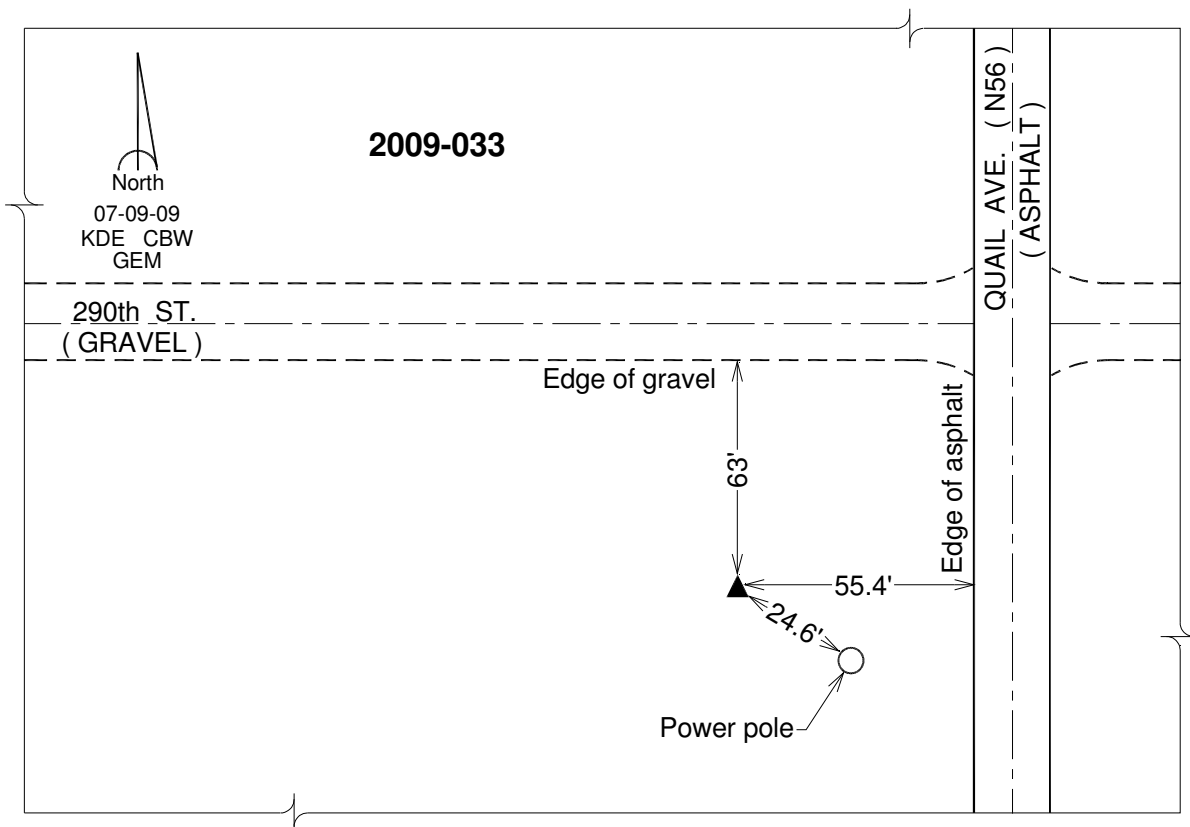
Northing: **229870.32**sft Easting: **1328477.99**sft

Orthometric Height: **1233.91**sft Ellipsoid Height: **1131.40**sft **Geoid12A**

Latitude: **N40°37'31.45846"** Longitude: **W94°37'25.57336"**

Mapping Angle: **-0°44'25"** Combination Scale Factor: **0.999944481**

Monument Type: Berntsen 3/4" Top Security Rod Monument with a 2-1/2" dia. domed survey cap and permanent magnet encased in a white PVC pipe with a NGS style alum. access cover.



This document was prepared by DCI on 04-17-2013 for use by Taylor County, Iowa.