

Taylor County, Iowa
Iowa South Zone (1402)
Horiz. Datum: **NAD83(NA2011)**
Vert. Datum: NAVD 1988
US Survey Feet
2013

Point Name: **1036**

Designation: 2009-036 Taylor Co GPS Control Pt (Set by DCI in 2009)

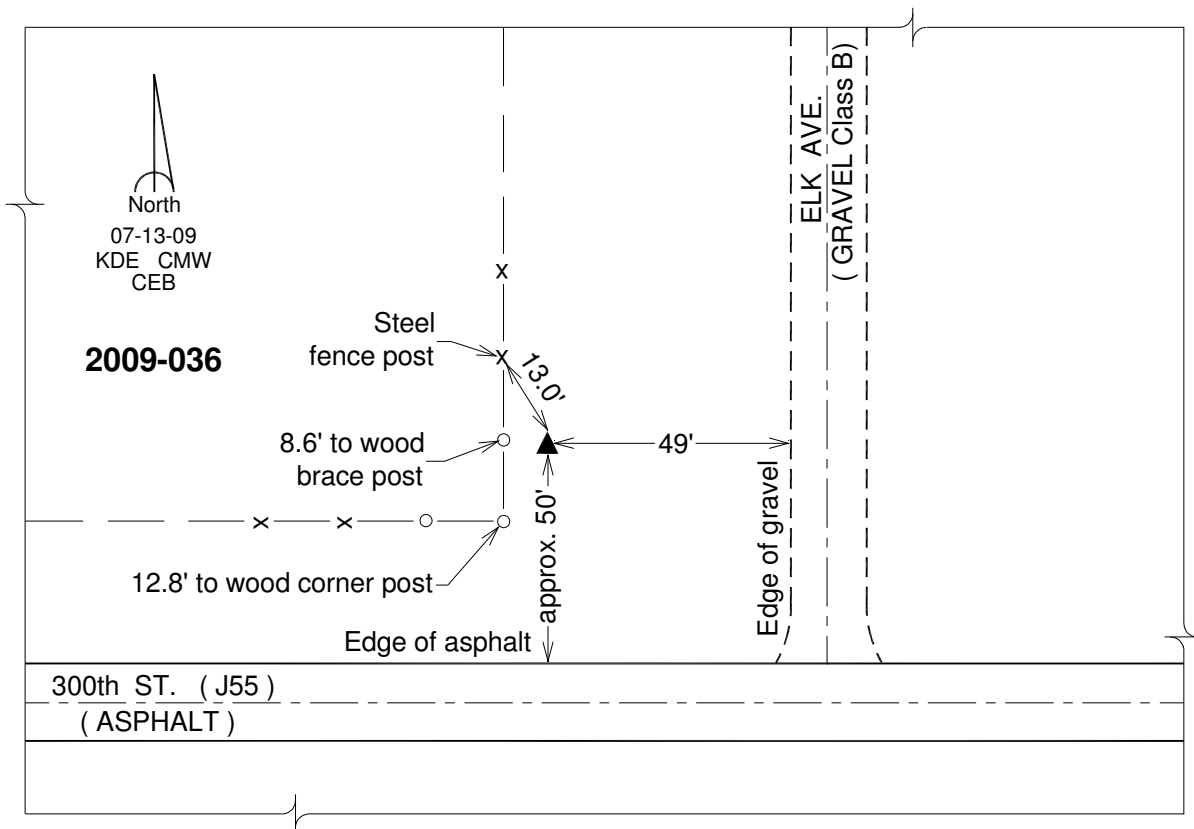
Northing: **229029.28sft** Easting: **1263381.53sft**

Orthometric Height: **1116.95sft** Ellipsoid Height: **1014.69sft** **Geoid12A**

Latitude: **N40°37'13.97199"** Longitude: **W94°51'29.52218"**

Mapping Angle: **-0°53'41"** Combination Scale Factor: **0.999950898**

Monument Type: Berntsen 3/4" Top Security Rod Monument with a 2-1/2" dia. domed survey cap and permanent magnet encased in a white PVC pipe with a NGS style alum. access cover.



This document was prepared by DCI on 04-17-2013 for use by Taylor County, Iowa.