

Taylor County, Iowa
Iowa South Zone (1402)
Horiz. Datum: **NAD83(NA2011)**
Vert. Datum: NAVD 1988
US Survey Feet
2013

Point Name: **1037**

Designation: 2009-037 Taylor Co GPS Control Pt (Set by DCI in 2009)

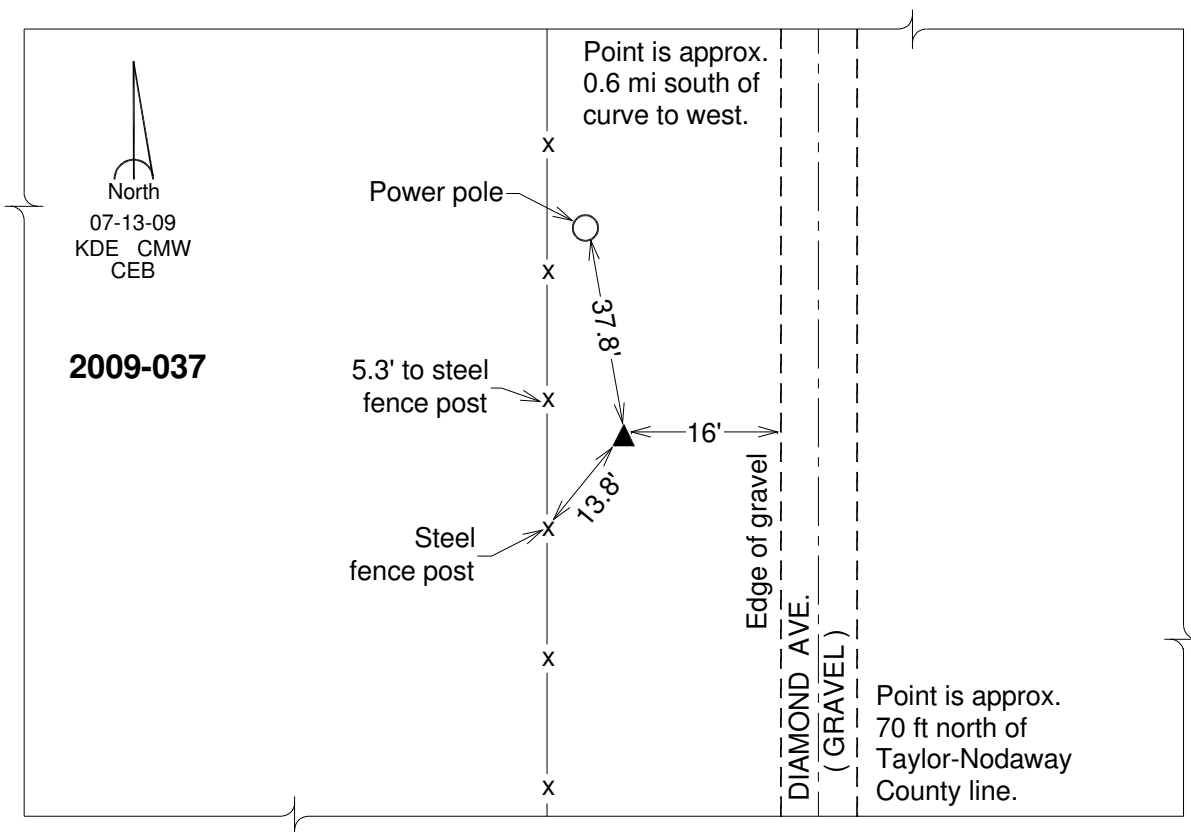
Northing: **212248.14sft** Easting: **1262988.39sft**

Orthometric Height: **1073.28sft** Ellipsoid Height: **970.86sft** **Geoid12A**

Latitude: **N40°34'28.11239"** Longitude: **W94°51'31.22063"**

Mapping Angle: **-0°53'42"** Combination Scale Factor: **0.999961386**

Monument Type: Berntsen 3/4" Top Security Rod Monument with a 2-1/2" dia. domed survey cap and permanent magnet encased in a white PVC pipe with a NGS style alum. access cover.



This document was prepared by DCI on 04-17-2013 for use by Taylor County, Iowa.