

**Taylor County, Iowa**  
 Iowa South Zone (1402)  
 Horiz. Datum: **NAD83(NA2011)**  
 Vert. Datum: NAVD 1988  
 US Survey Feet  
**2013**

Point Name: **1038**

**Designation:** 2009-038 Taylor Co GPS Control Pt (Set by DCI in 2009)

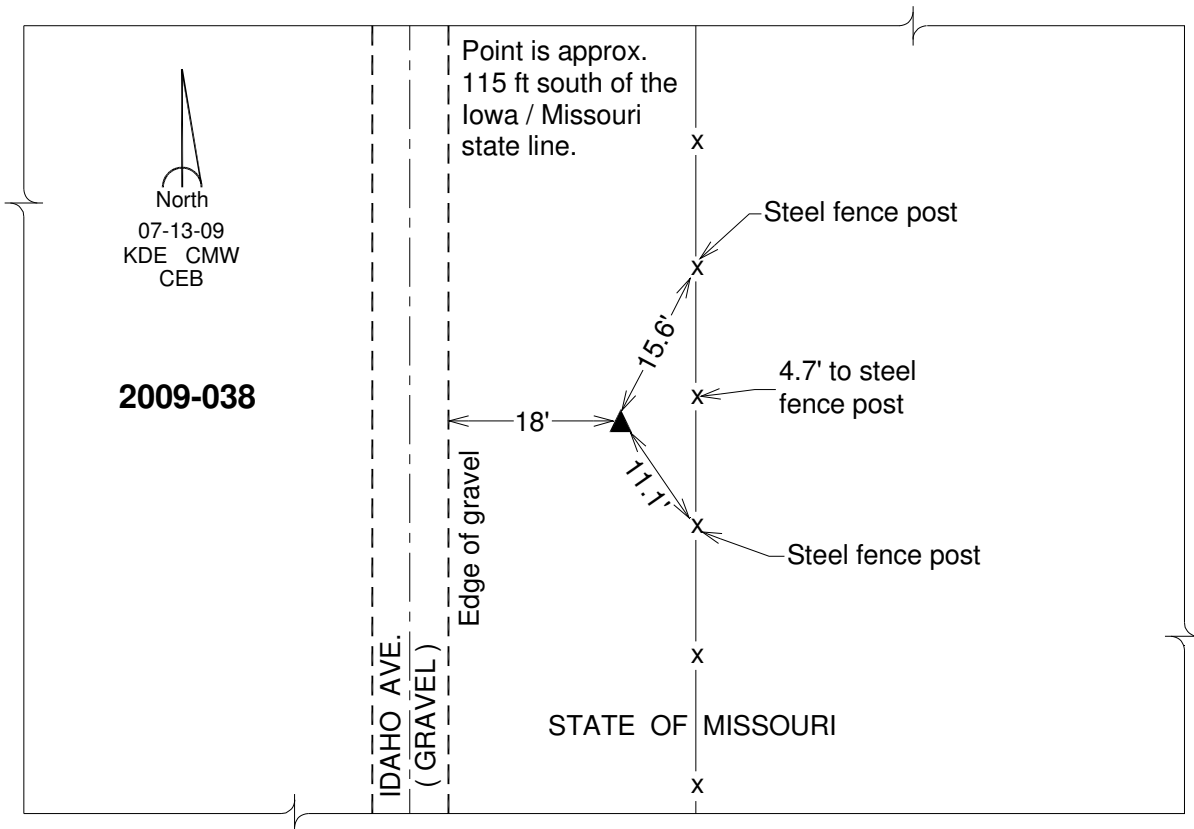
Northing: **211274.22sft**    Easting: **1286544.48sft**

Orthometric Height: **1155.34sft**    Ellipsoid Height: **1052.78sft**                      **Geoid12A**

Latitude: **N40°34'22.01204"**                      Longitude: **W94°46'25.80958"**

Mapping Angle: **-0°50'21"**                      Combination Scale Factor: **0.999957798**

**Monument Type:** Berntsen 3/4" Top Security Rod Monument with a 2-1/2" dia. domed survey cap and permanent magnet encased in a white PVC pipe with a NGS style alum. access cover.



*This document was prepared by DCI on 04-17-2013 for use by Taylor County, Iowa.*