

Taylor County, Iowa
 Iowa South Zone (1402)
 Horiz. Datum: **NAD83(NA2011)**
 Vert. Datum: NAVD 1988
 US Survey Feet
2013

Point Name: **1039**

Designation: 2009-039 Taylor Co GPS Control Pt (Set by DCI in 2009)

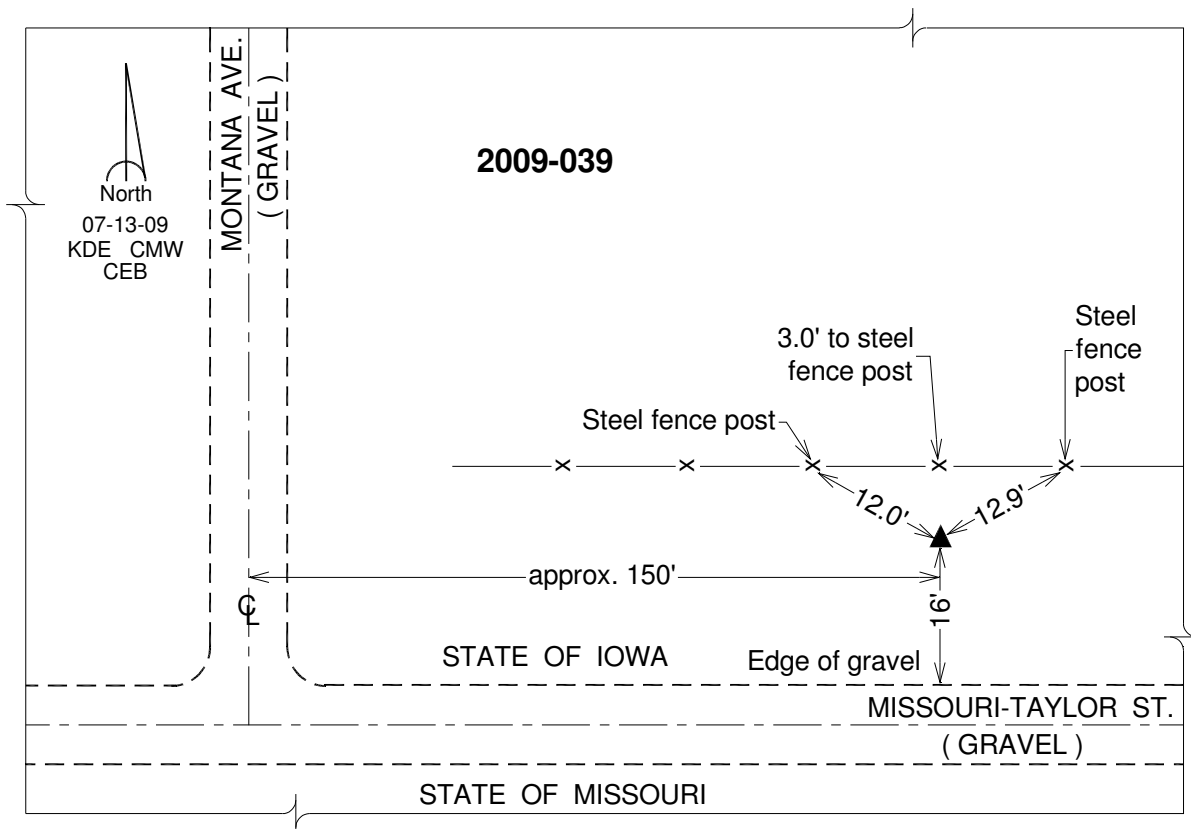
Northing: **210748.60**sft Easting: **1307823.35**sft

Orthometric Height: **1208.69**sft Ellipsoid Height: **1106.02**sft **Geoid12A**

Latitude: **N40°34'19.80523"** Longitude: **W94°41'50.00016"**

Mapping Angle: **-0°47'19"** Combination Scale Factor: **0.999955374**

Monument Type: Berntsen 3/4" Top Security Rod Monument with a 2-1/2" dia. domed survey cap and permanent magnet encased in a white PVC pipe with a NGS style alum. access cover.



This document was prepared by DCI on 04-17-2013 for use by Taylor County, Iowa.