

**Taylor County, Iowa**  
Iowa South Zone (1402)  
Horiz. Datum: **NAD83(NA2011)**  
Vert. Datum: NAVD 1988  
US Survey Feet  
**2013**

Point Name: **1042**

**Designation:** 2009-042 Taylor Co GPS Control Pt (Set by DCI in 2009)

Northing: **210403.01**sft    Easting: **1370686.73**sft

Orthometric Height: **1048.68**sft    Ellipsoid Height: **945.59**sft    **Geoid12A**

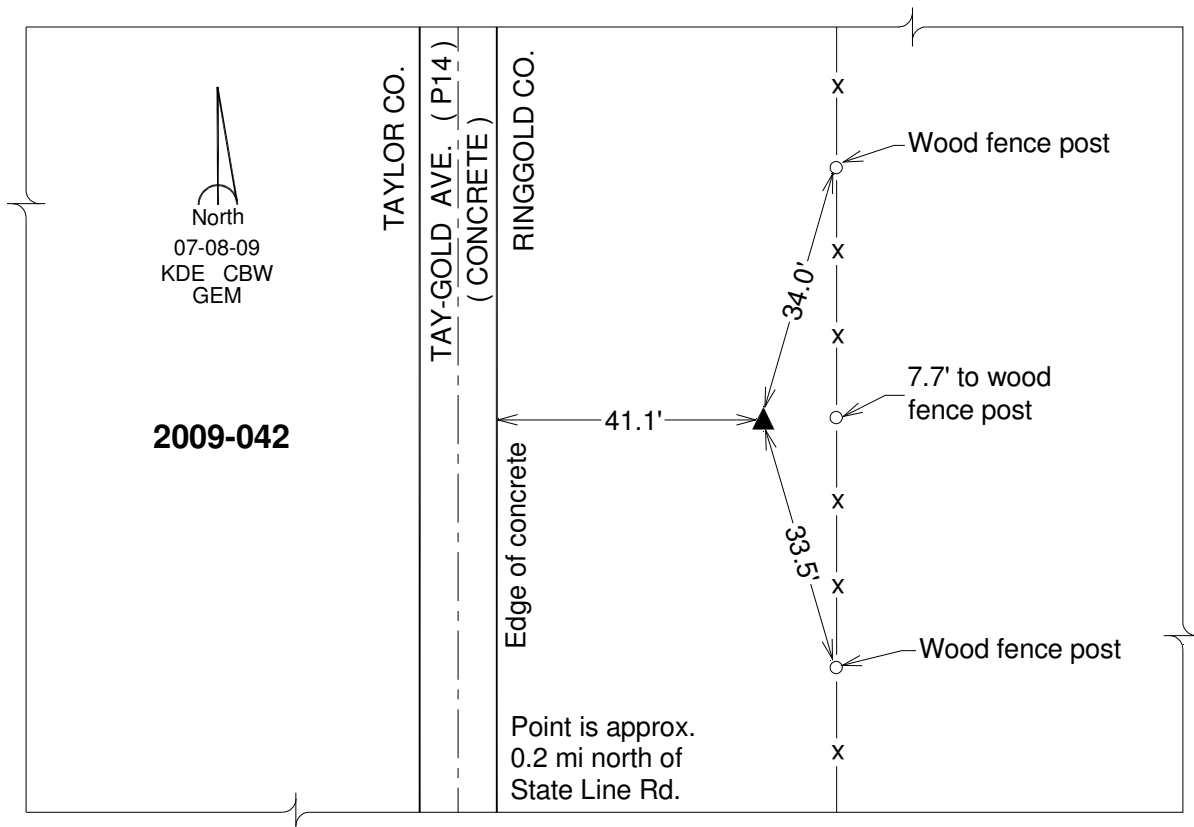
Latitude: **N40°34'24.13219"**

Longitude: **W94°28'15.39367"**

Mapping Angle: **-0°38'22"**

Combination Scale Factor: **0.999962801**

**Monument Type:** Berntsen 3/4" Top Security Rod Monument with a 2-1/2" dia. domed survey cap and permanent magnet encased in a white PVC pipe with a NGS style alum. access cover.



*This document was prepared by DCI on 04-17-2013 for use by Taylor County, Iowa.*