

Taylor County, Iowa
 Iowa South Zone (1402)
 Horiz. Datum: **NAD83(NA2011)**
 Vert. Datum: NAVD 1988
 US Survey Feet
2013

Point Name: **5008**

Designation: Page Co 2008-008 (set by DCI in 2008)

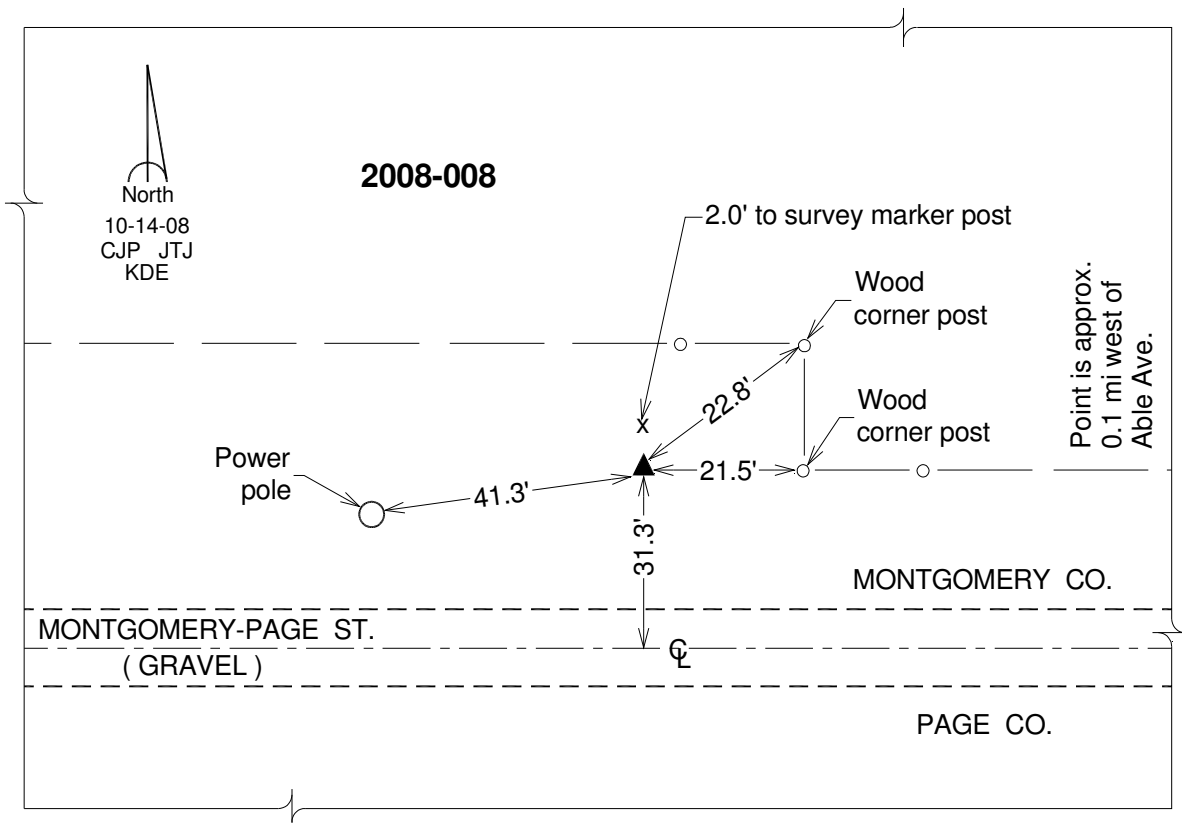
Northing: **331432.20**sft Easting: **1244617.39**sft

Orthometric Height: **1177.38**sft Ellipsoid Height: **1076.46**sft **Geoid12A**

Latitude: **N40°54'02.73715"** Longitude: **W94°55'54.67783"**

Mapping Angle: **-0°56'35"** Combination Scale Factor: **0.999910651**

Monument Type: Berntsen 3/4" Top Security Rod Monument with a 2-1/2" dia. domed survey cap and permanent magnet encased in a white PVC pipe with a NGS style alum. access cover.



This document was prepared by DCI on 04-17-2013 for use by Taylor County, Iowa.