

Taylor County, Iowa
Iowa South Zone (1402)
Horiz. Datum: **NAD83(NA2011)**
Vert. Datum: NAVD 1988
US Survey Feet
2013

Point Name: **5026**

Designation: Page Co 2008-026 (set by DCI in 2008)

Northing: **298836.38sft** Easting: **1244998.44sft**

Orthometric Height: **1049.25sft** Ellipsoid Height: **947.73sft** **Geoid12A**

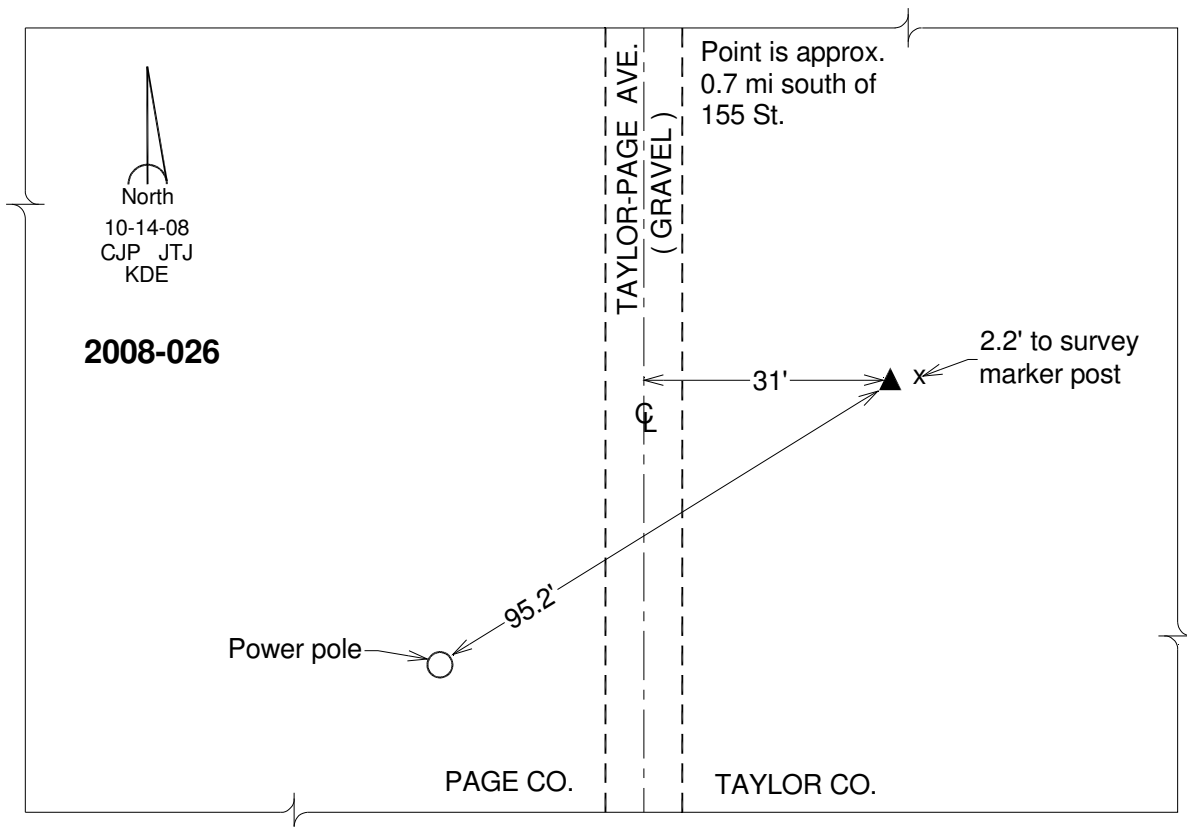
Latitude: **N40°48'40.75667"**

Longitude: **W94°55'42.74501"**

Mapping Angle: **-0°56'28"**

Combination Scale Factor: **0.999926126**

Monument Type: Berntsen 3/4" Top Security Rod Monument with a 2-1/2" dia. domed survey cap and permanent magnet encased in a white PVC pipe with a NGS style alum. access cover.



This document was prepared by DCI on 04-17-2013 for use by Taylor County, Iowa.