

**Taylor County, Iowa**  
Iowa South Zone (1402)  
Horiz. Datum: **NAD83(NA2011)**  
Vert. Datum: NAVD 1988  
US Survey Feet  
**2013**

Point Name: **5031**

**Designation:** CBN horiz, 3rd order vert. control station "S 106 RESET" PID:LF1488

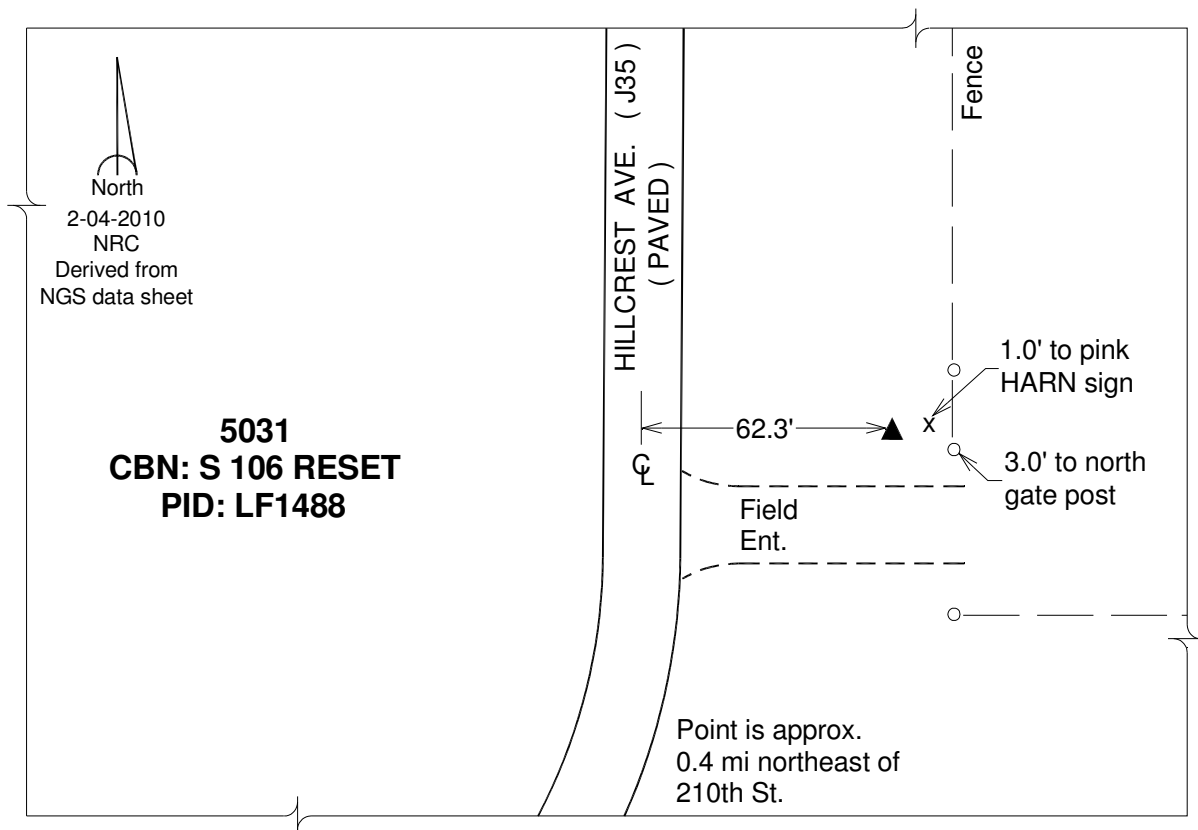
Northing: **274119.50**sft Easting: **1283002.82**sft

Orthometric Height: **1235.50**sft Ellipsoid Height: **1133.72**sft **Geoid12A**

Latitude: **N40°44'42.42069"** Longitude: **W94°47'23.77571"**

Mapping Angle: **-0°50'59"** Combination Scale Factor: **0.999925715**

**Monument Type:** The station is a standard NGS benchmark disk stamped "S 106 RESET 1984" set in the top of a concrete monument flush with the ground.



*This document was prepared by DCI on 04-17-2013 for use by Taylor County, Iowa.*