

**Taylor County, Iowa**  
Iowa South Zone (1402)  
Horiz. Datum: **NAD83(NA2011)**  
Vert. Datum: NAVD 1988  
US Survey Feet  
**2013**

Point Name: **5044**

**Designation:** Page Co 2008-044 (set by DCI in 2008)

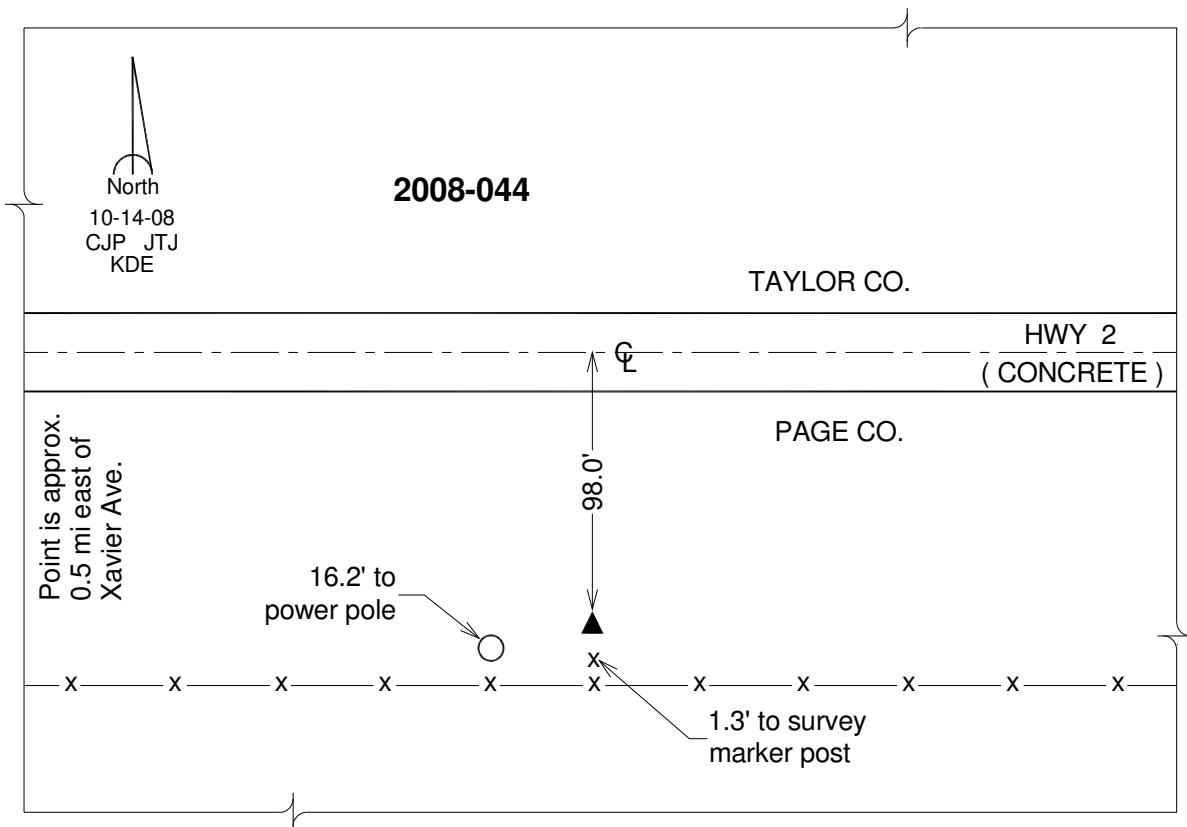
Northing: **268073.60sft**    Easting: **1248521.36sft**

Orthometric Height: **1193.62sft**    Ellipsoid Height: **1091.80sft**                      **Geoid12A**

Latitude: **N40°43'37.39109"**                      Longitude: **W94°54'50.43106"**

Mapping Angle: **-0°55'53"**                      Combination Scale Factor: **0.999930254**

**Monument Type:** Berntsen 3/4" Top Security Rod Monument with a 2-1/2" dia. domed survey cap and permanent magnet encased in a white PVC pipe with a NGS style alum. access cover.



*This document was prepared by DCI on 04-17-2013 for use by Taylor County, Iowa.*