

**Taylor County, Iowa**  
Iowa South Zone (1402)  
Horiz. Datum: **NAD83(NA2011)**  
Vert. Datum: NAVD 1988  
US Survey Feet  
**2013**

Point Name: **5045**

**Designation:** Page Co 2008-045 (set by DCI in 2008)

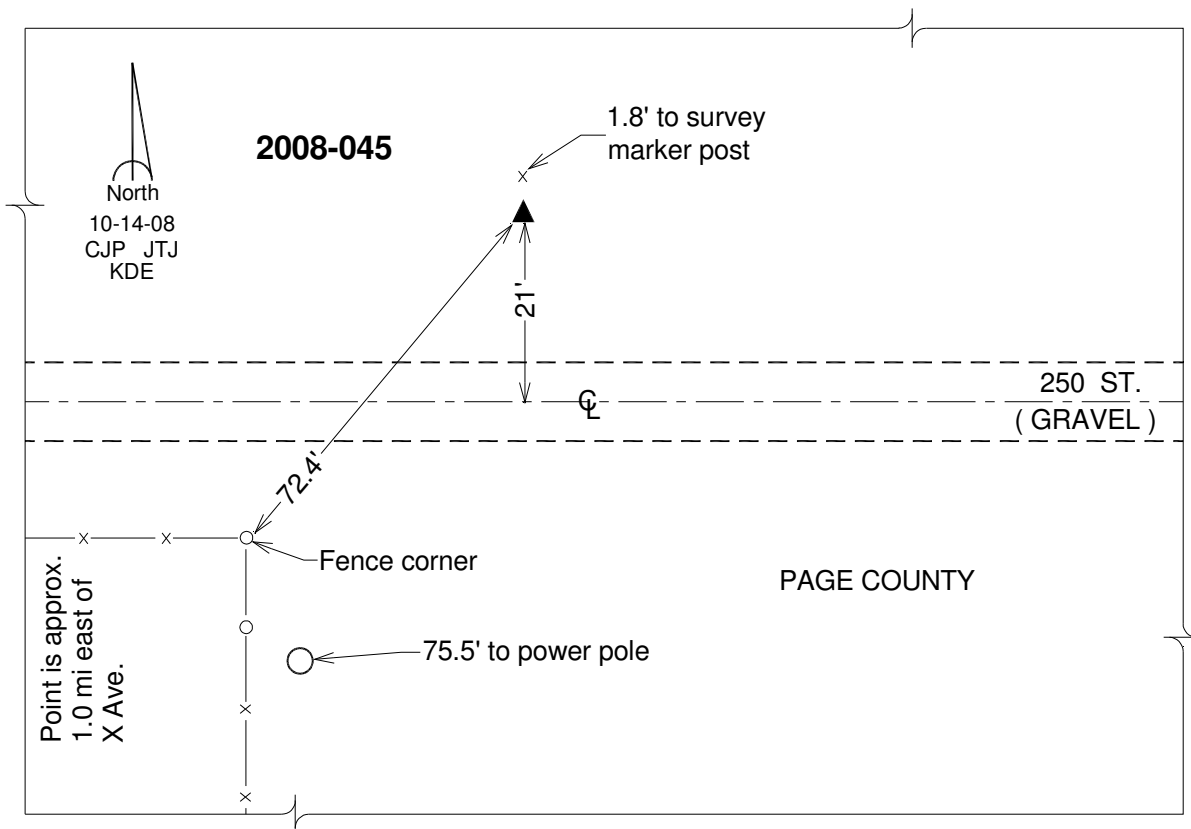
Northing: **250424.39sft**    Easting: **1247838.87sft**

Orthometric Height: **1143.03sft**    Ellipsoid Height: **1041.06sft**                      **Geoid12A**

Latitude: **N40°40'42.90777"**                      Longitude: **W94°54'55.56441"**

Mapping Angle: **-0°55'56"**                      Combination Scale Factor: **0.999939972**

**Monument Type:** Berntsen 3/4" Top Security Rod Monument with a 2-1/2" dia. domed survey cap and permanent magnet encased in a white PVC pipe with a NGS style alum. access cover.



*This document was prepared by DCI on 04-17-2013 for use by Taylor County, Iowa.*