

Taylor County, Iowa
 Iowa South Zone (1402)
 Horiz. Datum: **NAD83(NA2011)**
 Vert. Datum: NAVD 1988
 US Survey Feet
2013

Point Name: **5062**

Designation: Page Co 2008-062 (set by DCI in 2008)

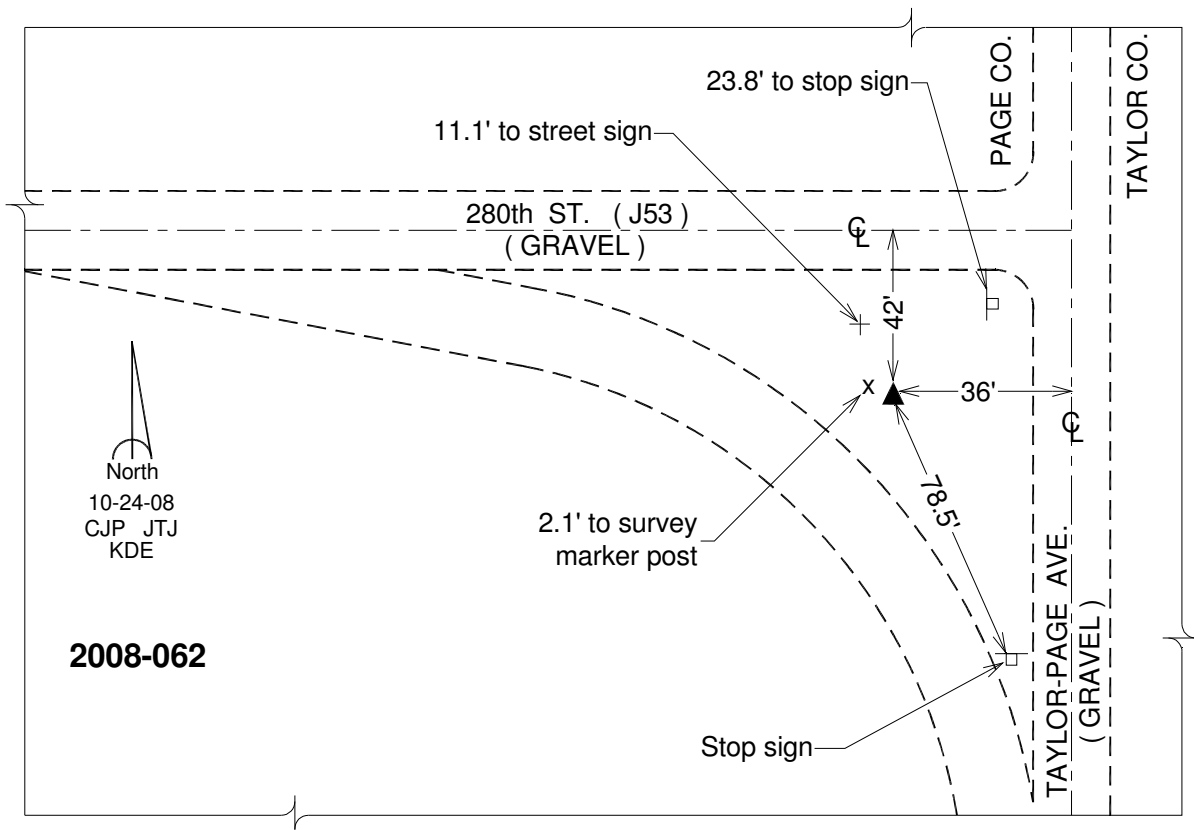
Northing: **234551.63sft** Easting: **1247738.98sft**

Orthometric Height: **1164.38sft** Ellipsoid Height: **1062.28sft** **Geoid12A**

Latitude: **N40°38'06.06921"** Longitude: **W94°54'53.50987"**

Mapping Angle: **-0°55'55"** Combination Scale Factor: **0.999946122**

Monument Type: Berntsen 3/4" Top Security Rod Monument with a 2-1/2" dia. domed survey cap and permanent magnet encased in a white PVC pipe with a NGS style alum. access cover.



This document was prepared by DCI on 04-17-2013 for use by Taylor County, Iowa.