

Taylor County, Iowa
Iowa South Zone (1402)
Horiz. Datum: **NAD83(NA2011)**
Vert. Datum: NAVD 1988
US Survey Feet
2013

Point Name: **5064**

Designation: CBN horiz. control station "Prescott 2" PID:LF1299

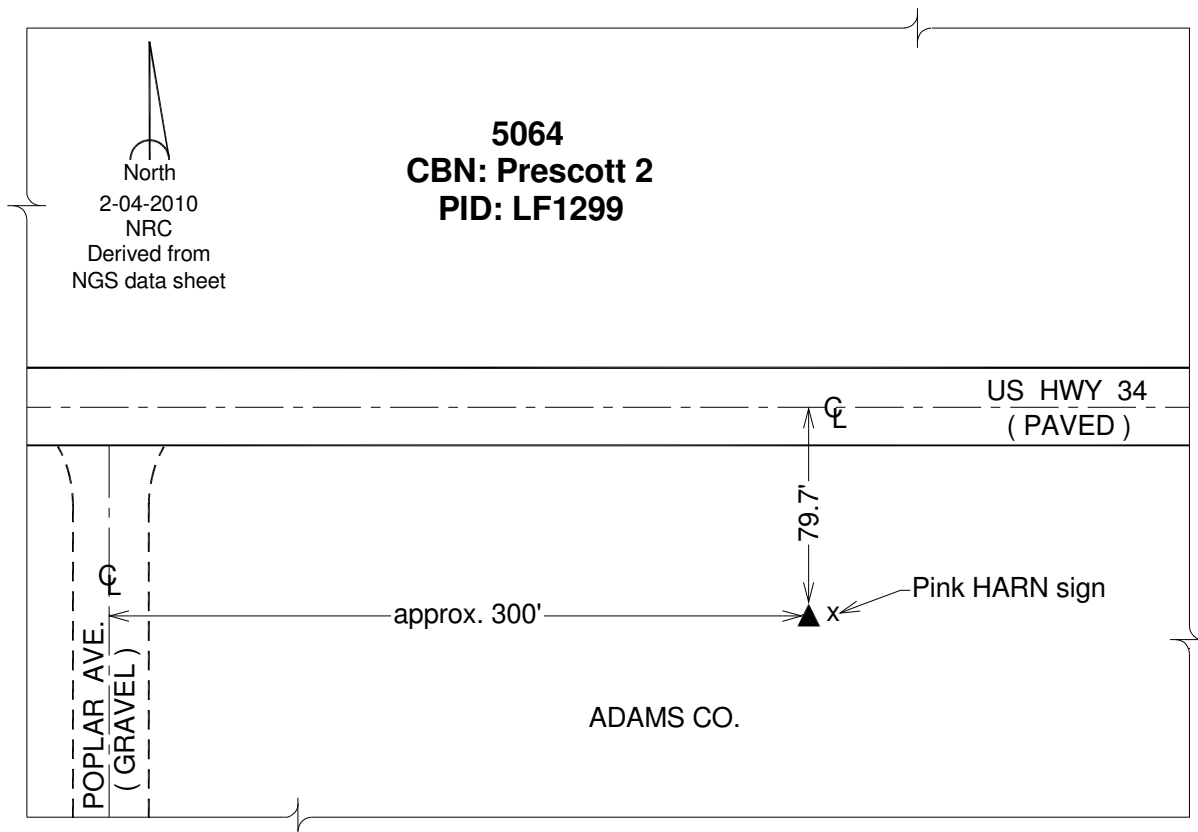
Northing: **358697.46sft** Easting: **1330494.39sft**

Orthometric Height: **1299.08sft** Ellipsoid Height: **1197.99sft** **Geoid12A**

Latitude: **N40°58'44.57939"** Longitude: **W94°37'20.98507"**

Mapping Angle: **-0°44'22"** Combination Scale Factor: **0.999898666**

Monument Type: The station is a CGS triangulation station disk stamped "Prescott 2 1971" and set in the top of a concrete monument.



This document was prepared by DCI on 04-17-2013 for use by Taylor County, Iowa.