

**Taylor County, Iowa**  
Iowa South Zone (1402)  
Horiz. Datum: **NAD83(NA2011)**  
Vert. Datum: NAVD 1988  
US Survey Feet  
**2013**

Point Name: **5065**

**Designation:** CBN horiz, 3rd order vert. control station "R 104 RESET" PID: LF0026

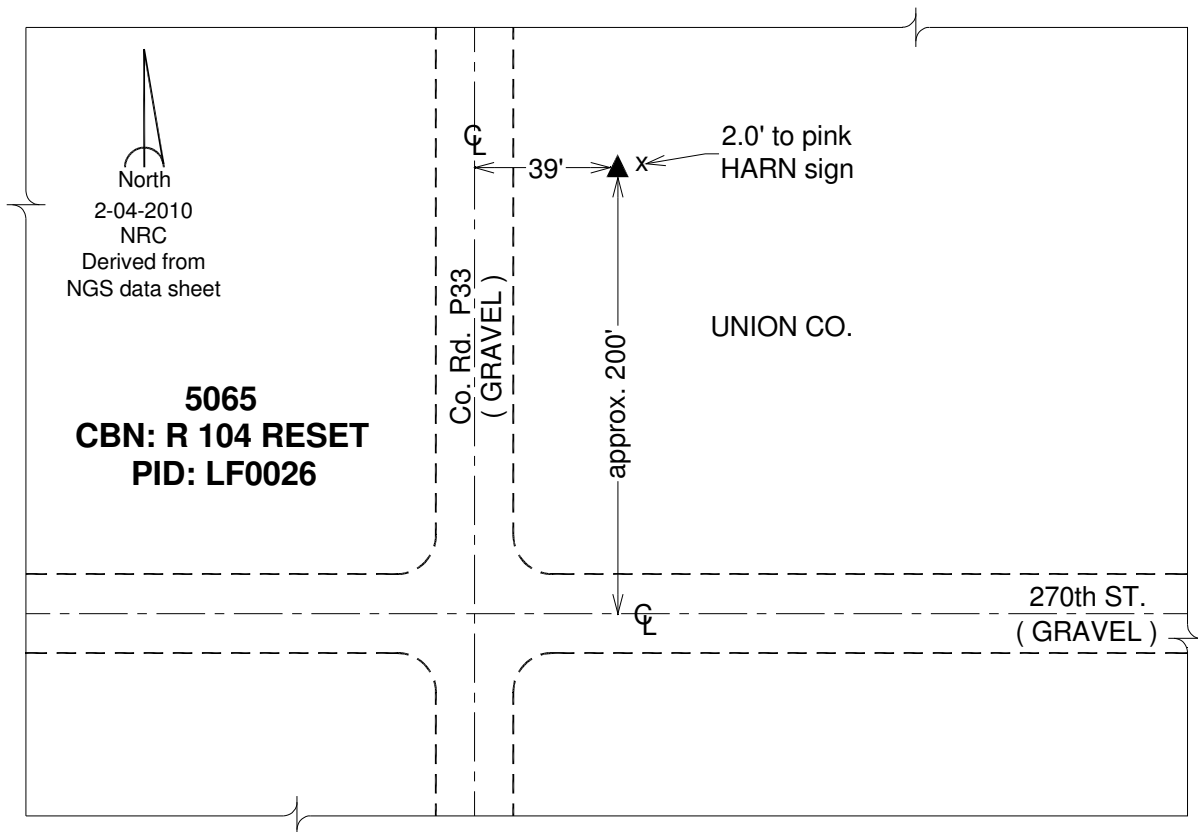
Northing: **334118.88sft** Easting: **1408985.83sft**

Orthometric Height: **1241.10sft** Ellipsoid Height: **1139.46sft** **Geoid12A**

Latitude: **N40°54'50.46773"** Longitude: **W94°20'14.54733"**

Mapping Angle: **-0°33'06"** Combination Scale Factor: **0.999906467**

**Monument Type:** The station is a CGS bench mark disk stamped "R 104 1935 RESET 1954" and set in the top of a concrete monument.



*This document was prepared by DCI on 04-17-2013 for use by Taylor County, Iowa.*