

Taylor County, Iowa
Iowa South Zone (1402)
Horiz. Datum: **NAD83(NA2011)**
Vert. Datum: NAVD 1988
US Survey Feet
2013

Point Name: **5066**

Designation: FBN horiz, 2nd order vert. control station "K 105" PID: LF0049

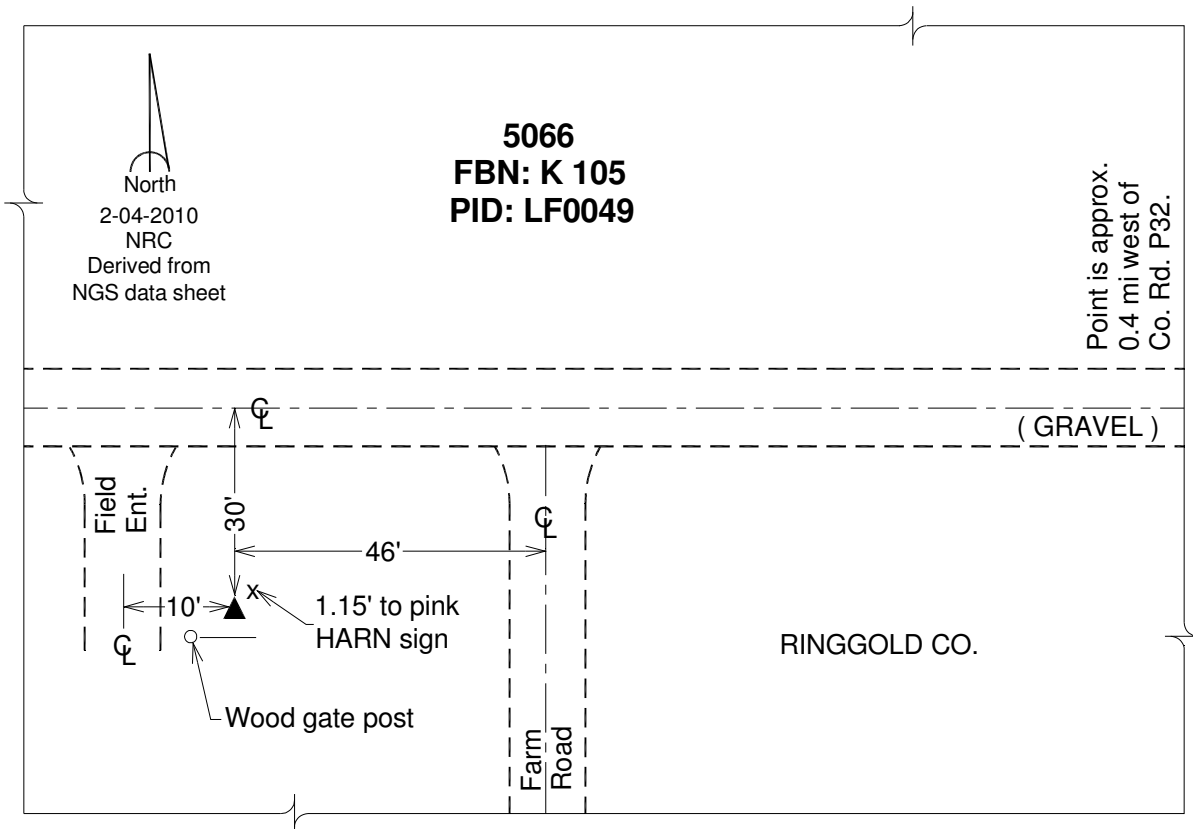
Northing: **239267.74sft** Easting: **1405958.40sft**

Orthometric Height: **1144.91sft** Ellipsoid Height: **1042.11sft** **Geoid12A**

Latitude: **N40°39'12.97541"** Longitude: **W94°20'41.97736"**

Mapping Angle: **-0°33'24"** Combination Scale Factor: **0.999943959**

Monument Type: The station is a CGS bench mark disk stamped "K 105 1935" and set in the top of a concrete monument.



This document was prepared by DCI on 04-17-2013 for use by Taylor County, Iowa.