

**Taylor County, Iowa**  
Iowa South Zone (1402)  
Horiz. Datum: **NAD83(NA2011)**  
Vert. Datum: NAVD 1988  
US Survey Feet  
**2013**

Point Name: **5067**

**Designation:** NGS 2nd order vert. control station "U 105" PID: LF0191

Northing: **245334.69sft** Easting: **1303661.36sft**

Orthometric Height: **1099.59sft** Ellipsoid Height: **997.36sft** **Geoid12A**

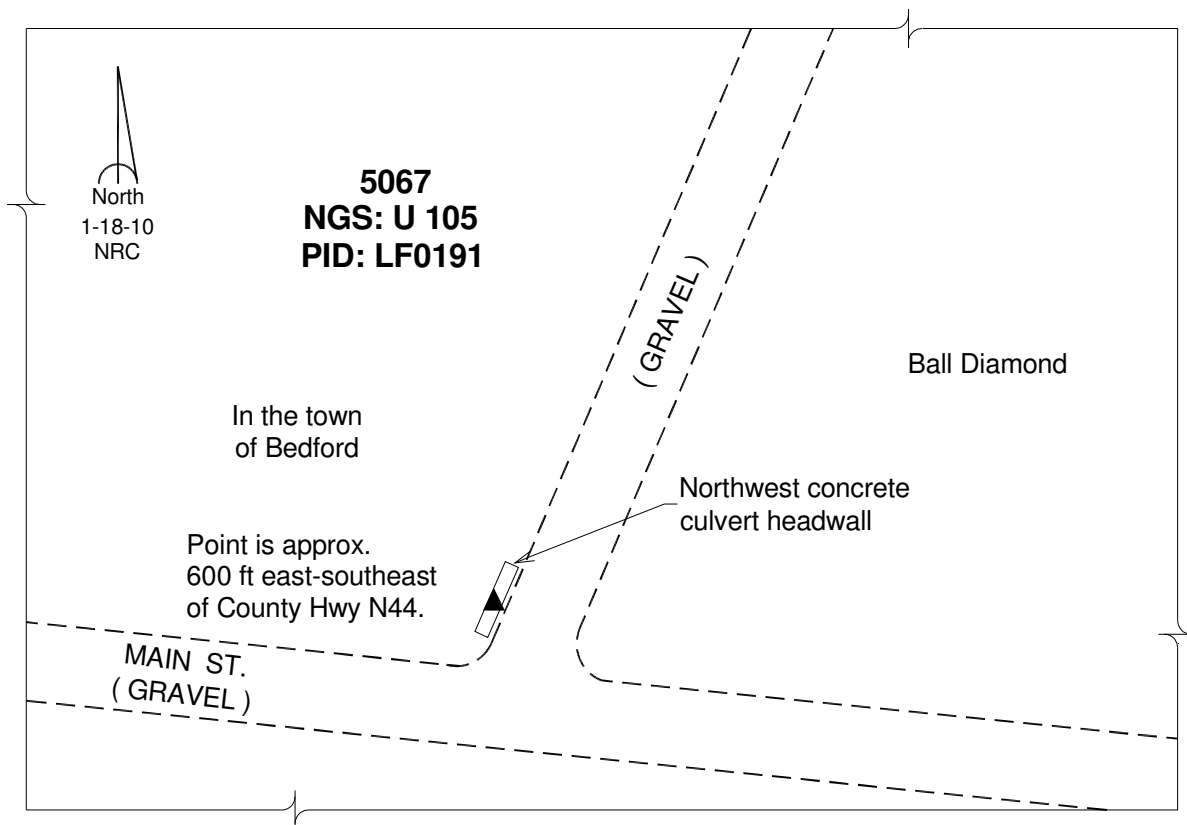
Latitude: **N40°40'00.95743"**

Longitude: **W94°42'50.18208"**

Mapping Angle: **-0°47'59"**

Combination Scale Factor: **0.999943917**

**Monument Type:** The station is a CGS bench mark disk stamped "U 105 1935" and set in the top of the northwest concrete headwall of a 6-foot street culvert.



*This document was prepared by DCI on 04-17-2013 for use by Taylor County, Iowa.*