

**Taylor County, Iowa**  
Iowa South Zone (1402)  
Horiz. Datum: **NAD83(NA2011)**  
Vert. Datum: NAVD 1988  
US Survey Feet  
**2013**

Point Name: **5070**

**Designation:** NGS 2nd order vert. control station "M 106" PID: LF0168

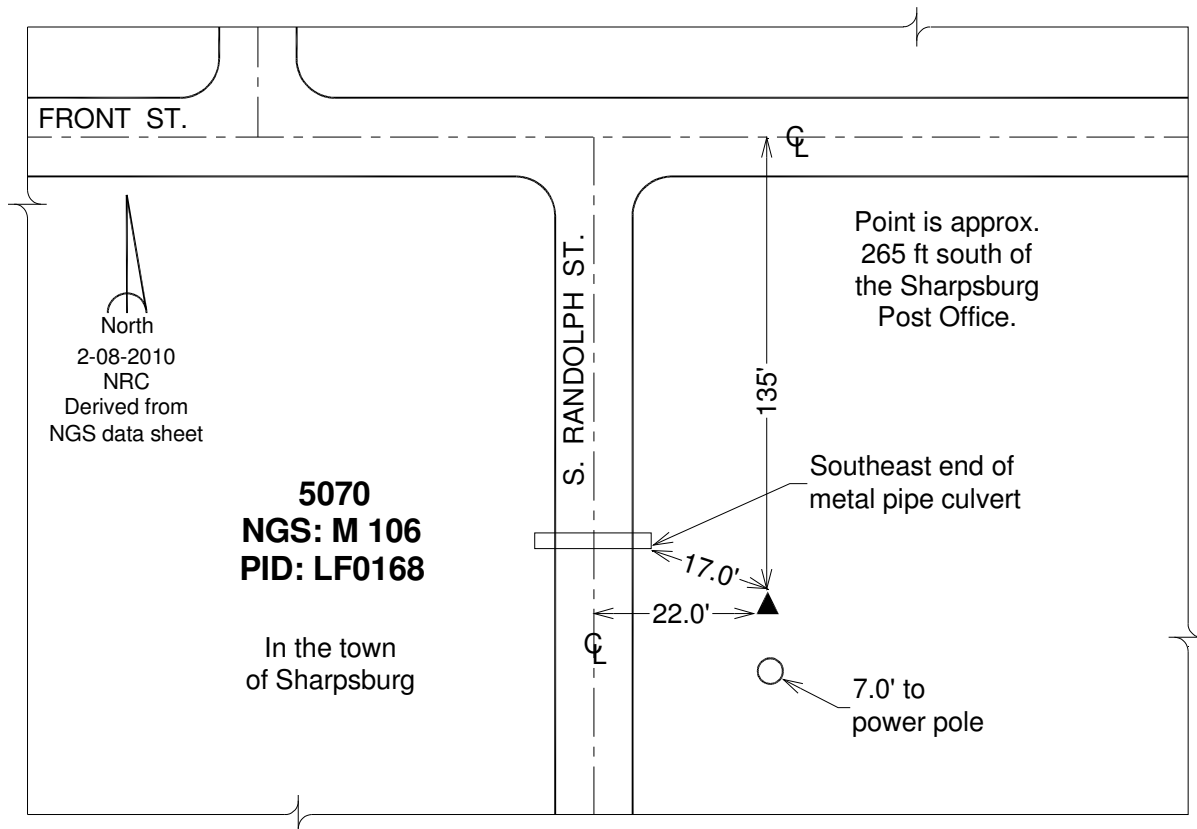
Northing: **294018.11**sft    Easting: **1324978.43**sft

Orthometric Height: **1278.48**sft    Ellipsoid Height: **1176.85**sft                      **Geoid12A**

Latitude: **N40°48'04.81664"**                      Longitude: **W94°38'21.85152"**

Mapping Angle: **-0°45'02"**                      Combination Scale Factor: **0.999916386**

**Monument Type:** The station is a CGS bench mark disk stamped "M 106 1935" and set in the top of a concrete monument.



*This document was prepared by DCI on 04-17-2013 for use by Taylor County, Iowa.*