

Taylor County, Iowa
Iowa South Zone (1402)
Horiz. Datum: **NAD83(NA2011)**
Vert. Datum: NAVD 1988
US Survey Feet
2013

Point Name: **5074**

Designation: NGS 2nd order vert. control station "LL 105" PID: LF0052

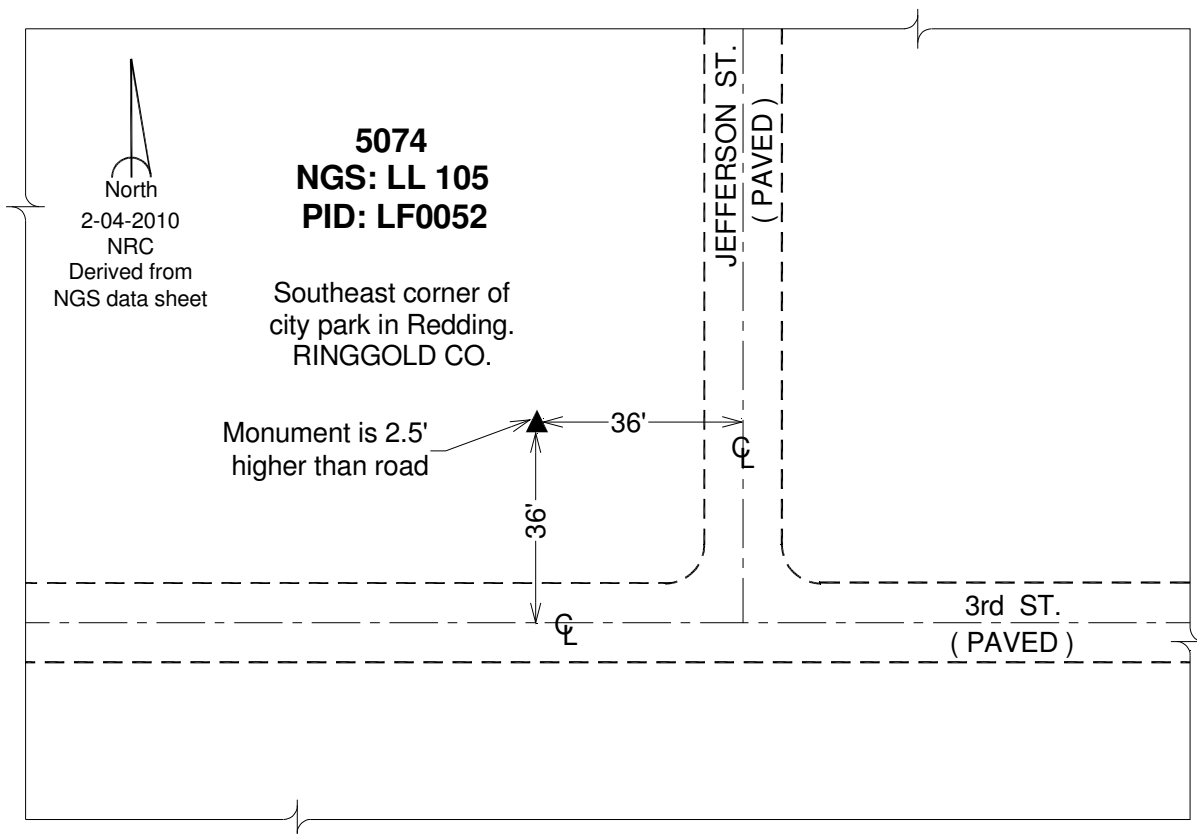
Northing: **221298.14sft** Easting: **1393680.03sft**

Orthometric Height: **1155.38sft** Ellipsoid Height: **1052.35sft** **Geoid12A**

Latitude: **N40°36'14.21246"** Longitude: **W94°23'18.89050"**

Mapping Angle: **-0°35'07"** Combination Scale Factor: **0.999952053**

Monument Type: The station is a CGS bench mark disk stamped "LL 105 1935" and set in the top of a concrete monument.



This document was prepared by DCI on 04-17-2013 for use by Taylor County, Iowa.