

**Taylor County, Iowa**  
Iowa South Zone (1402)  
Horiz. Datum: **NAD83(NA2011)**  
Vert. Datum: NAVD 1988  
US Survey Feet  
**2013**

Point Name: **5075**

**Designation:** NGS 2nd order vert. control station "P 105" PID: LF0186

Northing: **216335.52sft** Easting: **1283614.39sft**

Orthometric Height: **1056.75sft** Ellipsoid Height: **954.25sft** **Geoid12A**

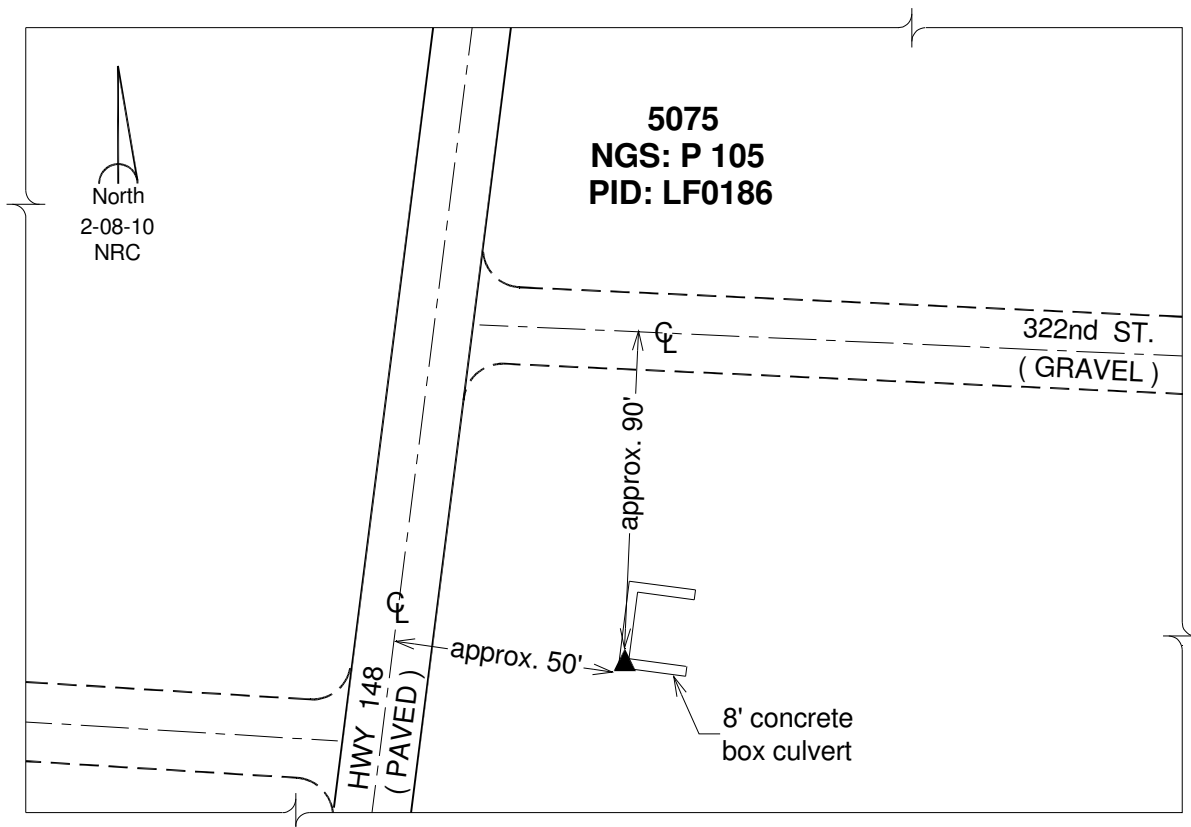
Latitude: **N40°35'11.59292"**

Longitude: **W94°47'04.74365"**

Mapping Angle: **-0°50'46"**

Combination Scale Factor: **0.999959916**

**Monument Type:** The station is a CGS bench mark disk stamped "P 105 1935" and set in the top of the east headwall of a concrete box culvert.



*This document was prepared by DCI on 04-17-2013 for use by Taylor County, Iowa.*