

Taylor County, Iowa
Iowa South Zone (1402)
Horiz. Datum: **NAD83(NA2011)**
Vert. Datum: NAVD 1988
US Survey Feet
2013

Point Name: **5076**

Designation: NGS 2nd order vert. control station "J 109" PID: MJ0114

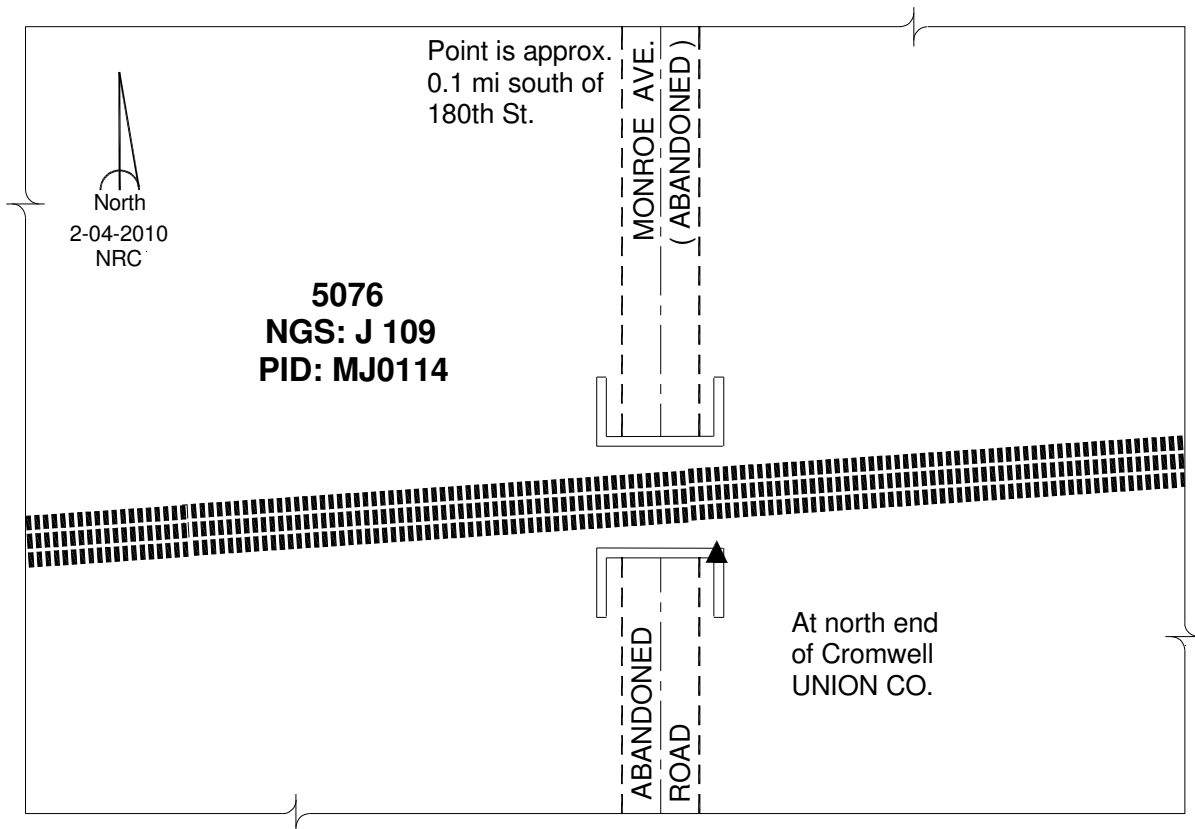
Northing: **382370.15sft** Easting: **1375177.50sft**

Orthometric Height: **1256.84sft** Ellipsoid Height: **1155.80sft** **Geoid12A**

Latitude: **N41°02'43.76328"** Longitude: **W94°27'41.83880"**

Mapping Angle: **-0°38'00"** Combination Scale Factor: **0.999896882**

Monument Type: The station is a CGS bench mark disk stamped "J 109 1935" and set in the top of the east concrete abutment of a railroad bridge.



This document was prepared by DCI on 04-17-2013 for use by Taylor County, Iowa.