

1996  
Washington County, Iowa  
Iowa South Zone(1402)  
NAD\_83

Point Number: **104**

Northing: **544410.90(Ft)** Easting: **2087110.75(Ft)**

Northing: **165936.775(M)** Easting: **636152.627(M)**

Elev: **712.57(Ft)** NAVD\_88

Elev: **217.191(M)** NAVD\_88 Ellip Ht: **184.782(M)** 93C Geoid Ht: **-32.409(M)**

Latitude: **41-28-57.953417** Longitude: **91-52-10.657153**

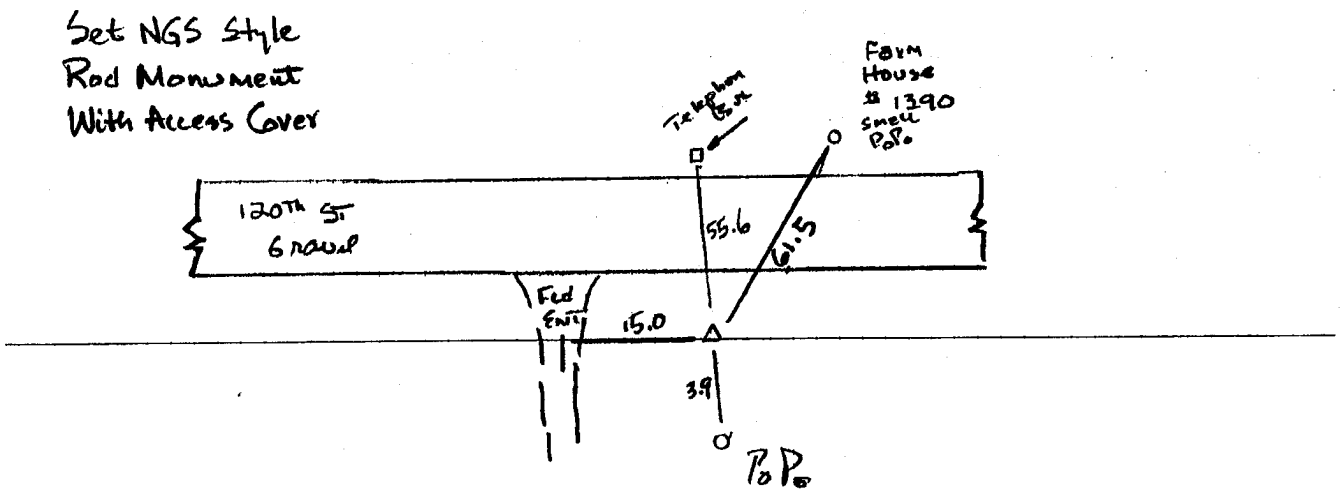
Theta: **1-04-26.14** Combination Factor: **0.99993145**

Designation: **96-104 WASHINGTON CO. GPS CONTROL PT**

Monument Type: **5/8" dia driven aluminum rod with 2 1/2" dia aluminum cap and permanent magnet encased in a 5" dia PVC pipe with aluminum access cover.**

To Reach: **20 ft. South of 120th St., across from house #1390, 4 ft. N.W. of Po.Po. w/trans. Near the N.E. corner of Sec 15, T77N, R9W.**

Date Printed: 11/25/96



104  
RKE KRR