

1996
Washington County, Iowa
Iowa South Zone(1402)
NAD_83

Point Number: 107

Northing: 548171.86(Ft) Easting: 2150486.06(Ft)

Northing: 167083.118(M) Easting: 655469.464(M)

Elev: 729.07(Ft) NAVD_88

Elev: 222.220(M) NAVD_88 Ellip Ht: 189.753(M) 93C Geoid Ht: -32.467(M)

Latitude: 41-29-22.535889 Longitude: 91-38-17.117164

Theta: 1-13-35.20 Combination Factor: 0.99993126

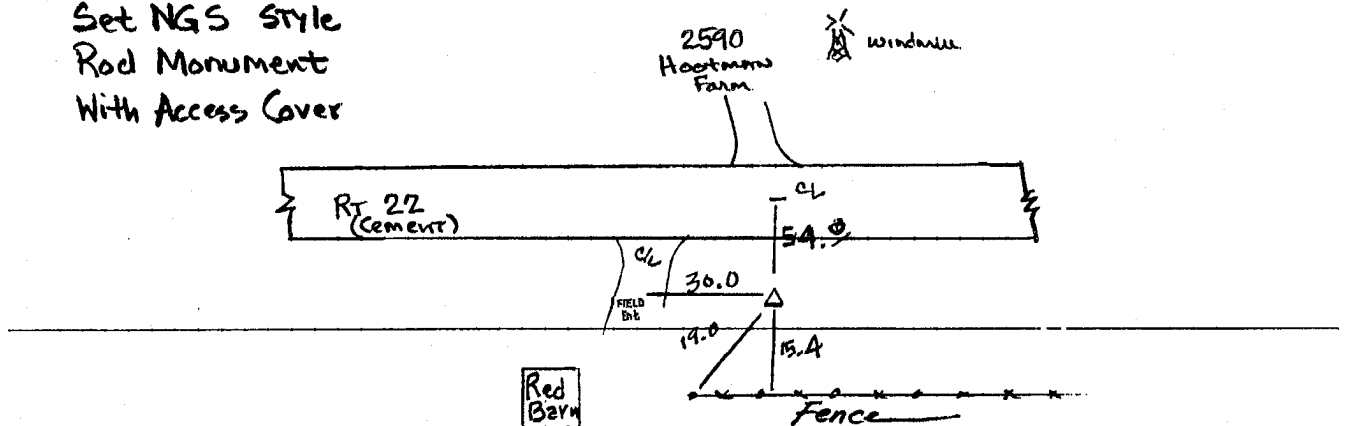
Designation: 96-107 WASHINGTON CO. GPS CONTROL PT

Monument Type: 5/8" dia driven aluminum rod with 2 1/2" dia aluminum cap and permanent magnet encased in a 5" dia PVC pipe with aluminum access cover.

To Reach: 50 ft. South of Hwy 22, 30 ft. East of field entrance to South. Near the W 1/4 corner Sec 11, T77N, R7W.

Date Printed: 11/25/96

Set NGS Style
Rod Monument
With Access Cover



107
RKE KRR