

1996
Washington County, Iowa
Iowa South Zone(1402)
NAD_83

Point Number: 146

Northing: 463114.47(Ft) Easting: 2131045.39(Ft)

Northing: 141157.573(M) Easting: 649543.933(M)

Elev: 714.80(Ft) NAVD_88

Elev: 217.871(M) NAVD_88 Ellip Ht: 185.181(M) 93C Geoid Ht: -32.690(M)

Latitude: 41-15-26.341715 Longitude: 91-42-55.445317

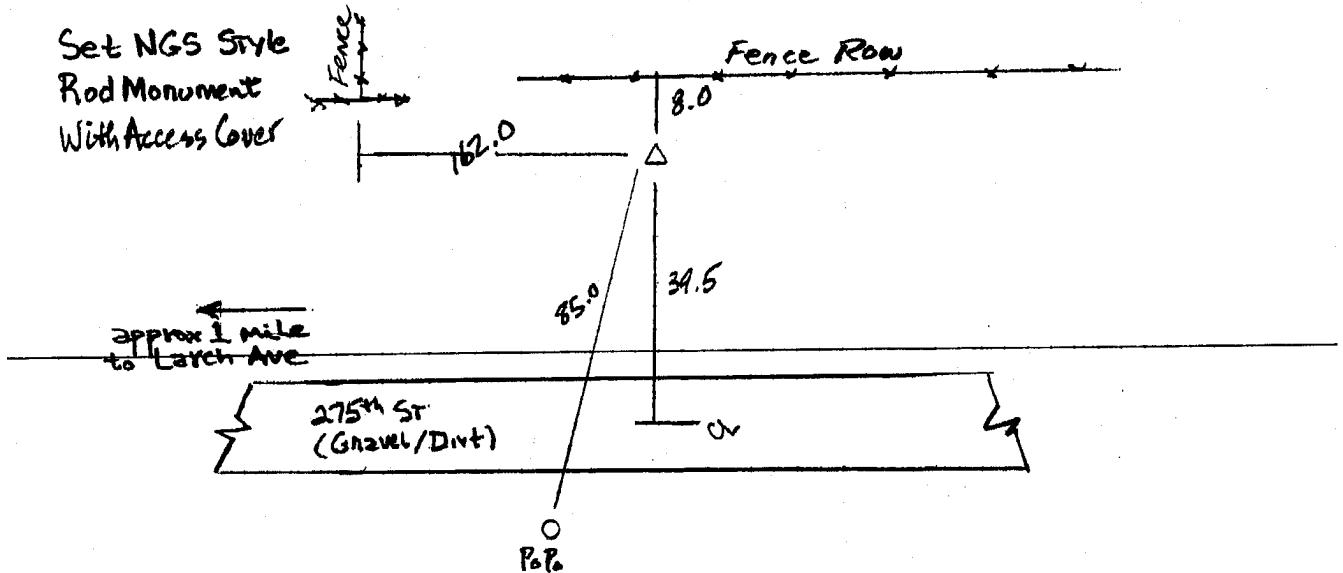
Theta: 1-10-31.86 Combination Factor: 0.99991979

Designation: 96-146 WASHINGTON CO. GPS CONTROL PT

Monument Type: 5/8" dia driven aluminum rod with 2 1/2" dia aluminum cap and permanent magnet encased in a 5" dia PVC pipe with aluminum access cover.

To Reach: 40 ft. North of 275th St., 200 ft. East of W 1/4 corner of Sec 31, R7W, T75N.

Date Printed: 11/25/96



146
RKE KRR