

1996  
Washington County, Iowa  
Iowa South Zone(1402)  
NAD\_83

Point Number: 159

Northing: 440312.68(Ft) Easting: 2172241.34(Ft)

Northing: 134207.573(M) Easting: 662100.483(M)

Elev: 641.98(Ft) NAVD\_88

Elev: 195.676(M) NAVD\_88 Ellip Ht: 162.902(M) 93C Geoid Ht: -32.774(M)

Latitude: 41-11-32.397551 Longitude: 91-34-02.806939

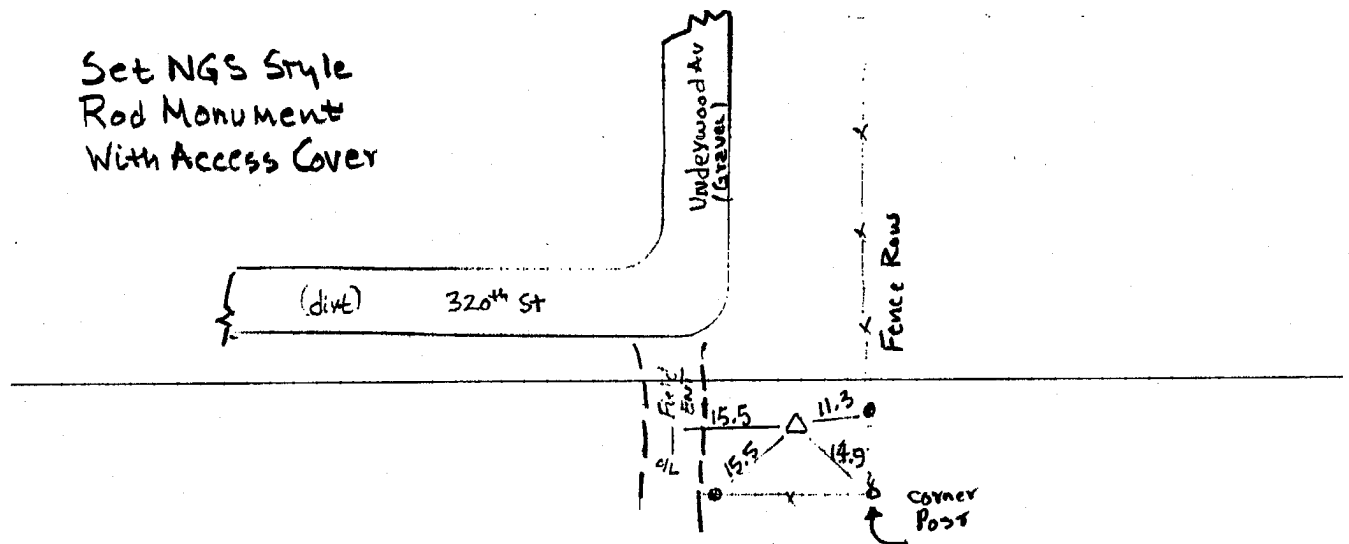
Theta: 1-16-22.71 Combination Factor: 0.99992282

Designation: 96-159 WASHINGTON CO. GPS CONTROL PT

Monument Type: 5/8" dia driven aluminum rod with 2 1/2" dia aluminum cap and permanent magnet encased in a 5" dia PVC pipe with aluminum access cover.

To Reach: 75 ft. S.E. of 90 degree curve in road Underwood Av. and 320th St. Near the S.E. corner of Sec 20, T74N R6W.

Date Printed: 11/25/96



159  
RKE KRR