

**Wayne County, Iowa**  
Iowa South Zone (1402)  
Horiz. Datum: NAD83(NSRS2007)  
Vert. Datum: NAVD 1988  
US Survey Feet  
**2007**

Point Name: **1**

**Designation:** 2007-001 Wayne Co GPS Control Pt

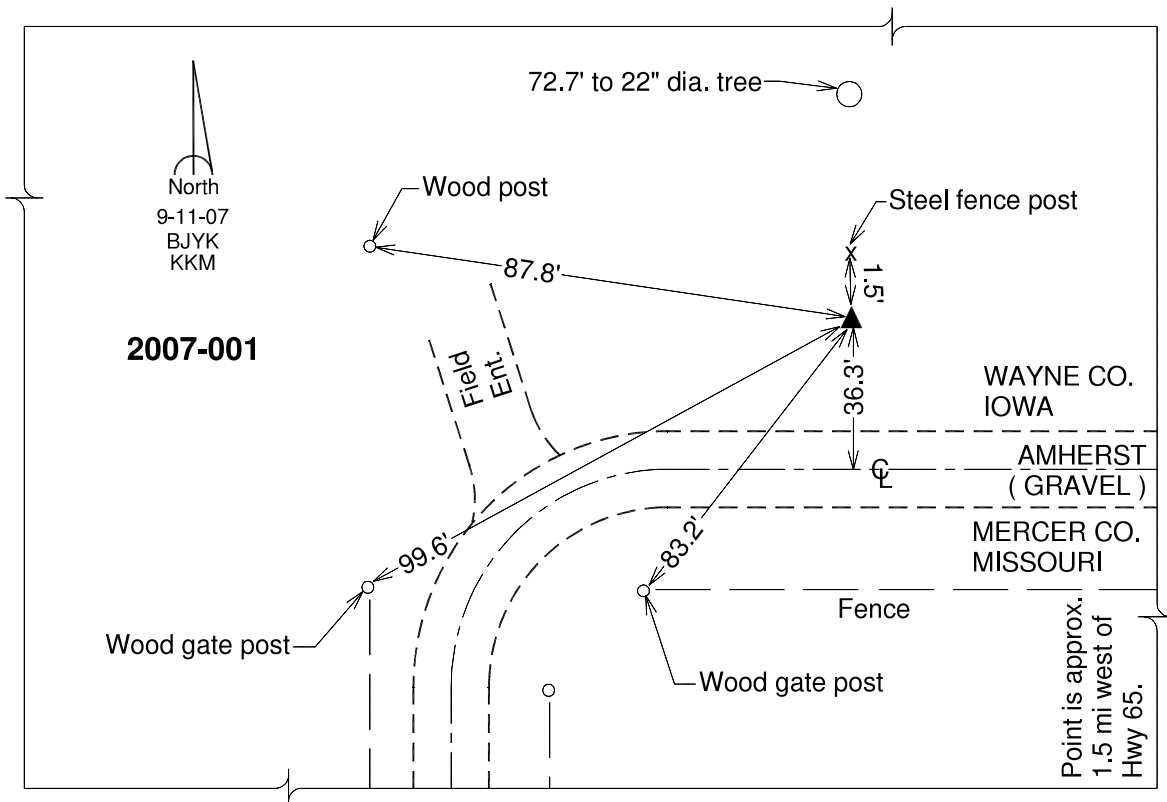
Northing: **211462.93**sft    Easting: **1625576.85**sft

Orthometric Height: **1065.40**sft    Ellipsoid Height: **961.90**sft    **Geoid03**

Latitude: **40°34'49.43620"N**                      Longitude: **93°33'12.32357"W**

Mapping Angle: **-0°02'07"**                      Combination Scale Factor: **0.99996070**

**Monument Type:** Berntsen 3/4" Top Security Rod Monument with a 2-1/2" dia. domed survey cap and permanent magnet encased in a white PVC pipe with a NGS style alum. access cover.



*This document was prepared by DCI and GBC for use by Wayne County, Iowa.*