

**Wayne County, Iowa**  
 Iowa South Zone (1402)  
 Horiz. Datum: NAD83(NSRS2007)  
 Vert. Datum: NAVD 1988  
 US Survey Feet  
**2007**

Point Name: **10**

**Designation:** 2007-010 Wayne Co GPS Control Pt

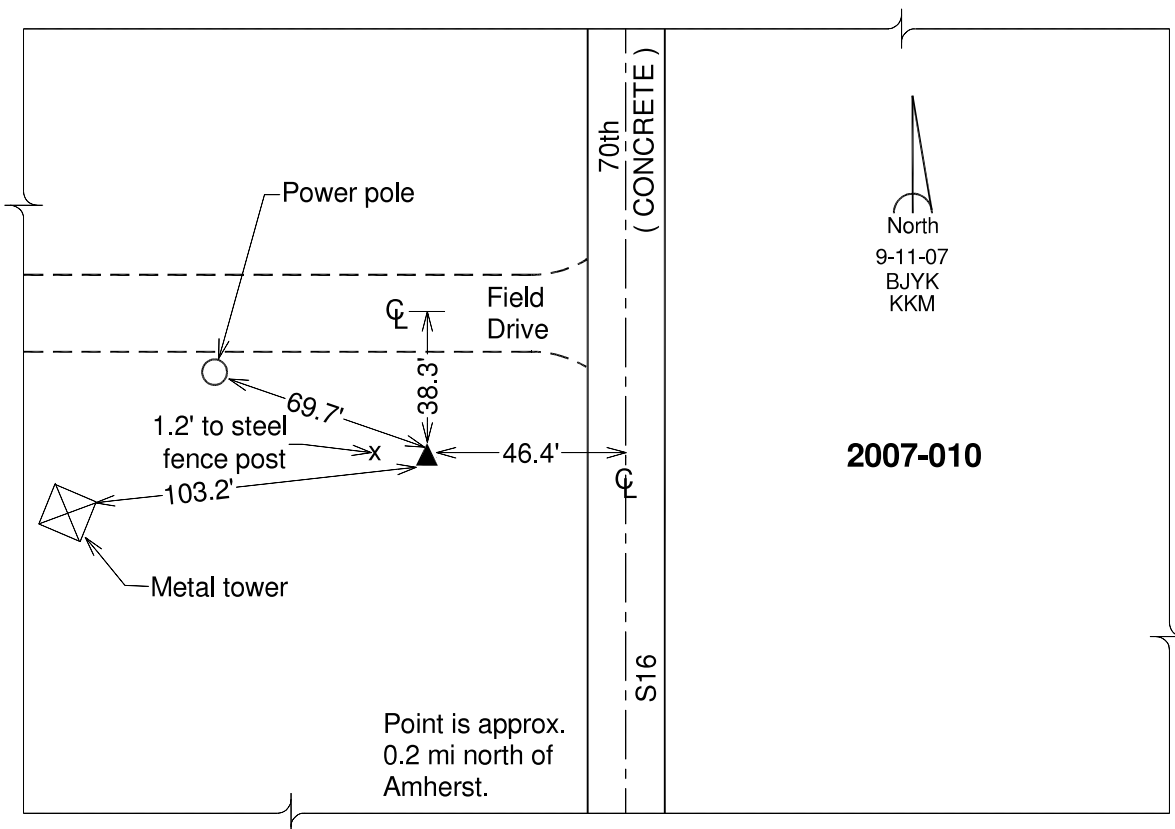
Northing: **212242.40**sft    Easting: **1656461.95**sft

Orthometric Height: **1087.60**sft    Ellipsoid Height: **984.02**sft    **Geoid03**

Latitude: **40°34'57.13076"N**    Longitude: **93°26'32.04690"W**

Mapping Angle: **0°02'17"**    Combination Scale Factor: **0.99995924**

**Monument Type:** Berntsen 3/4" Top Security Rod Monument with a 2-1/2" dia. domed survey cap and permanent magnet encased in a white PVC pipe with a NGS style alum. access cover.



*This document was prepared by DCI and GBC for use by Wayne County, Iowa.*