

**Wayne County, Iowa**  
Iowa South Zone (1402)  
Horiz. Datum: NAD83(NSRS2007)  
Vert. Datum: NAVD 1988  
US Survey Feet  
**2007**

Point Name: **1009**

**Designation:** USGS 3rd order vertical control station "TT 17 E 1933 RESET 1977"

Northing: **322357.12sft**    Easting: **1640515.38sft**

Orthometric Height: **1087.05sft**    Ellipsoid Height: **983.90sft**    **Geoid03**

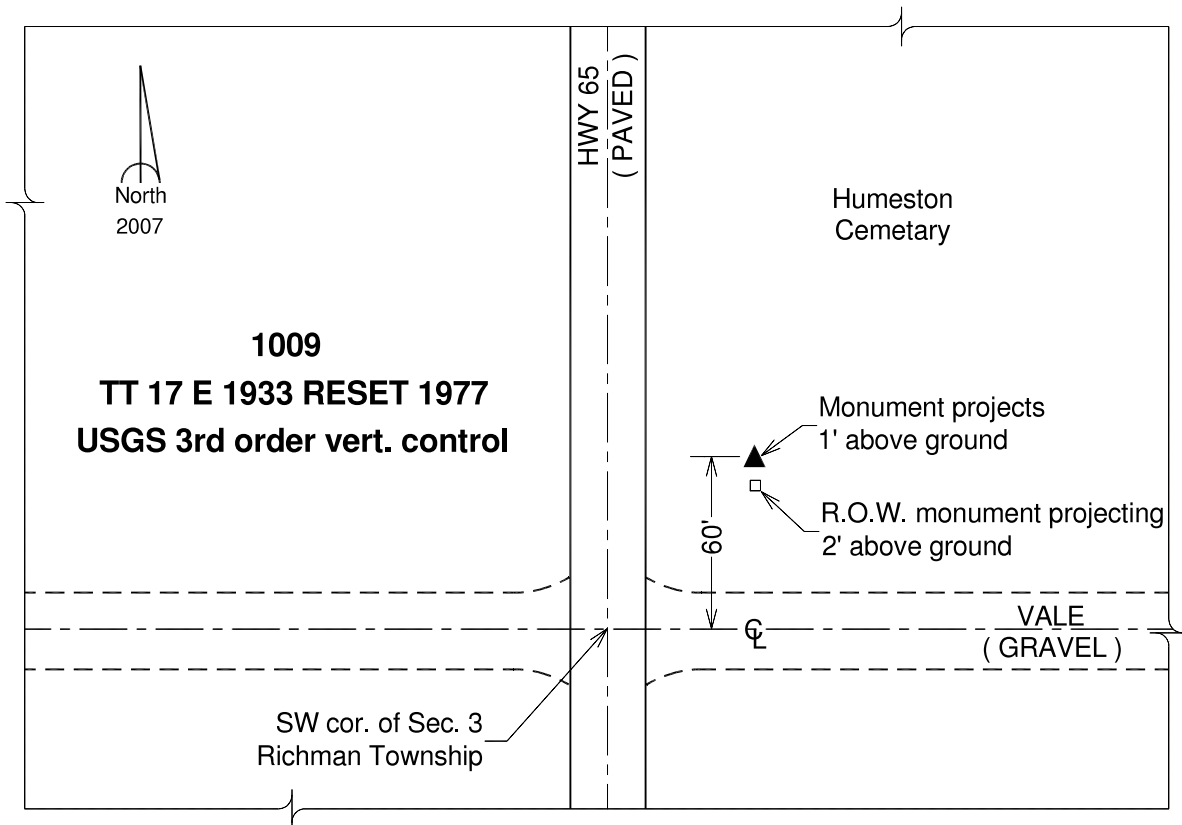
Latitude: **40°53'05.25524"N**

Longitude: **93°29'58.71475"W**

Mapping Angle: **0°00'01"**

Combination Scale Factor: **0.99991656**

**Monument Type:** The station mark is a standard tablet stamped "TT 17 E 1933 RESET 1977" and set in the top of a concrete post, approx. 8" above ground surface.



*This document was prepared by DCI and GBC for use by Wayne County, Iowa.*