

Wayne County, Iowa
 Iowa South Zone (1402)
 Horiz. Datum: NAD83(NSRS2007)
 Vert. Datum: NAVD 1988
 US Survey Feet
2007

Point Name: **11**

Designation: 2007-011 Wayne Co GPS Control Pt

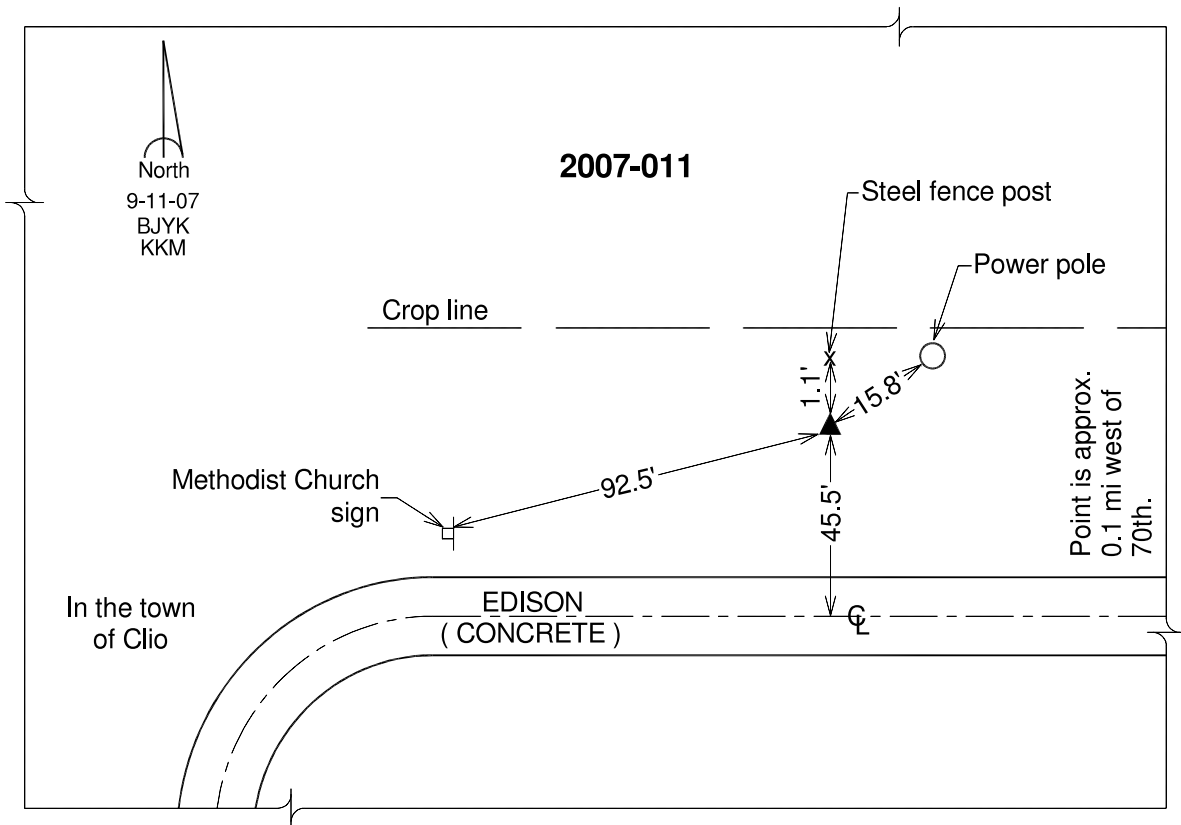
Northing: **232370.85**sft Easting: **1655969.51**sft

Orthometric Height: **1107.78**sft Ellipsoid Height: **1004.23**sft **Geoid03**

Latitude: **40°38'16.02881"N** Longitude: **93°26'38.26113"W**

Mapping Angle: **0°02'13"** Combination Scale Factor: **0.99994842**

Monument Type: Berntsen 3/4" Top Security Rod Monument with a 2-1/2" dia. domed survey cap and permanent magnet encased in a white PVC pipe with a NGS style alum. access cover.



This document was prepared by DCI and GBC for use by Wayne County, Iowa.