

**Wayne County, Iowa**  
 Iowa South Zone (1402)  
 Horiz. Datum: NAD83(NSRS2007)  
 Vert. Datum: NAVD 1988  
 US Survey Feet  
**2007**

Point Name: **12**

**Designation:** 2007-012 Wayne Co GPS Control Pt

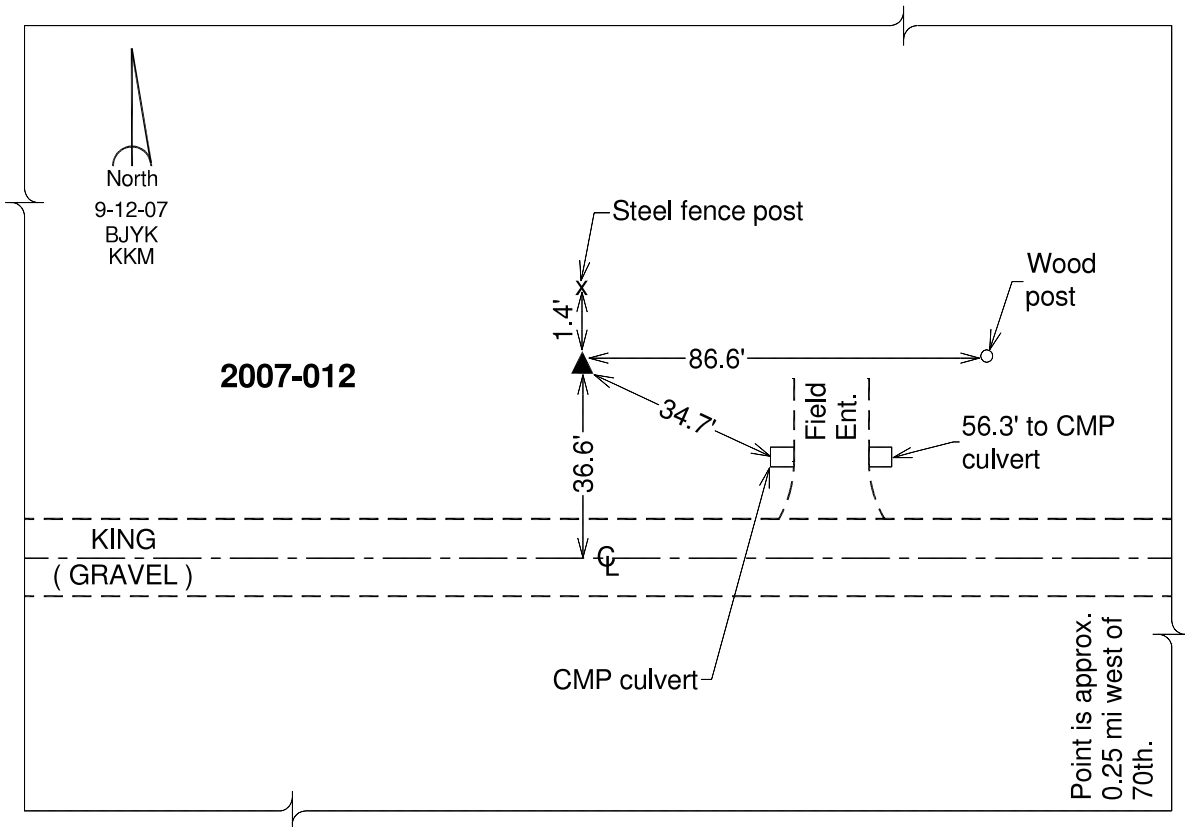
Northing: **263933.98**sft    Easting: **1655050.17**sft

Orthometric Height: **1105.45**sft    Ellipsoid Height: **1001.94**sft                      **Geoid03**

Latitude: **40°43'27.91856"N**                      Longitude: **93°26'49.93753"W**

Mapping Angle: **0°02'05"**                      Combination Scale Factor: **0.99993492**

**Monument Type:** Berntsen 3/4" Top Security Rod Monument with a 2-1/2" dia. domed survey cap and permanent magnet encased in a white PVC pipe with a NGS style alum. access cover.



*This document was prepared by DCI and GBC for use by Wayne County, Iowa.*