

Wayne County, Iowa
Iowa South Zone (1402)
Horiz. Datum: NAD83(NSRS2007)
Vert. Datum: NAVD 1988
US Survey Feet
2007

Point Name: **14**

Designation: 2007-014 Wayne Co GPS Control Pt

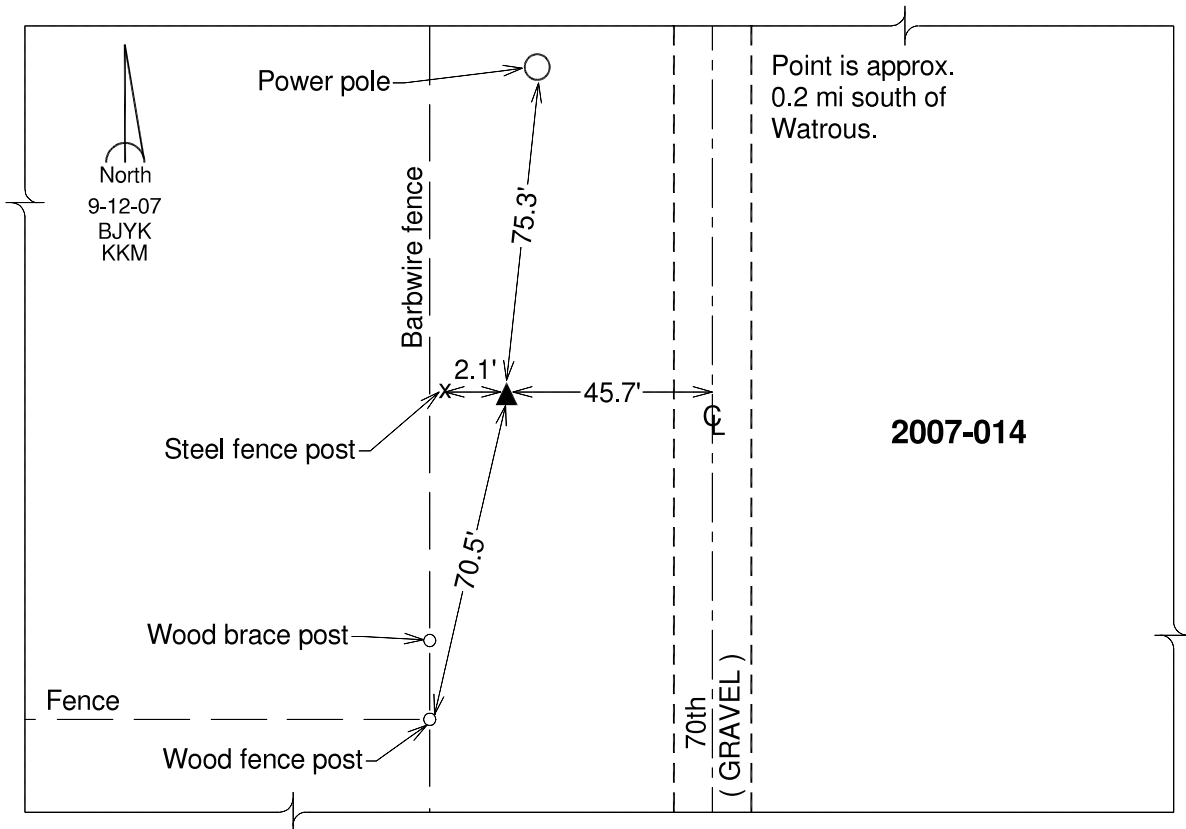
Northing: **326124.16**sft Easting: **1656377.09**sft

Orthometric Height: **1091.70**sft Ellipsoid Height: **988.53**sft **Geoid03**

Latitude: **40°53'42.42574"N** Longitude: **93°26'32.16717"W**

Mapping Angle: **0°02'17"** Combination Scale Factor: **0.99991536**

Monument Type: Berntsen 3/4" Top Security Rod Monument with a 2-1/2" dia. domed survey cap and permanent magnet encased in a white PVC pipe with a NGS style alum. access cover.



This document was prepared by DCI and GBC for use by Wayne County, Iowa.