

Wayne County, Iowa
 Iowa South Zone (1402)
 Horiz. Datum: NAD83(NSRS2007)
 Vert. Datum: NAVD 1988
 US Survey Feet
2007

Point Name: **16**

Designation: 2007-016 Wayne Co GPS Control Pt

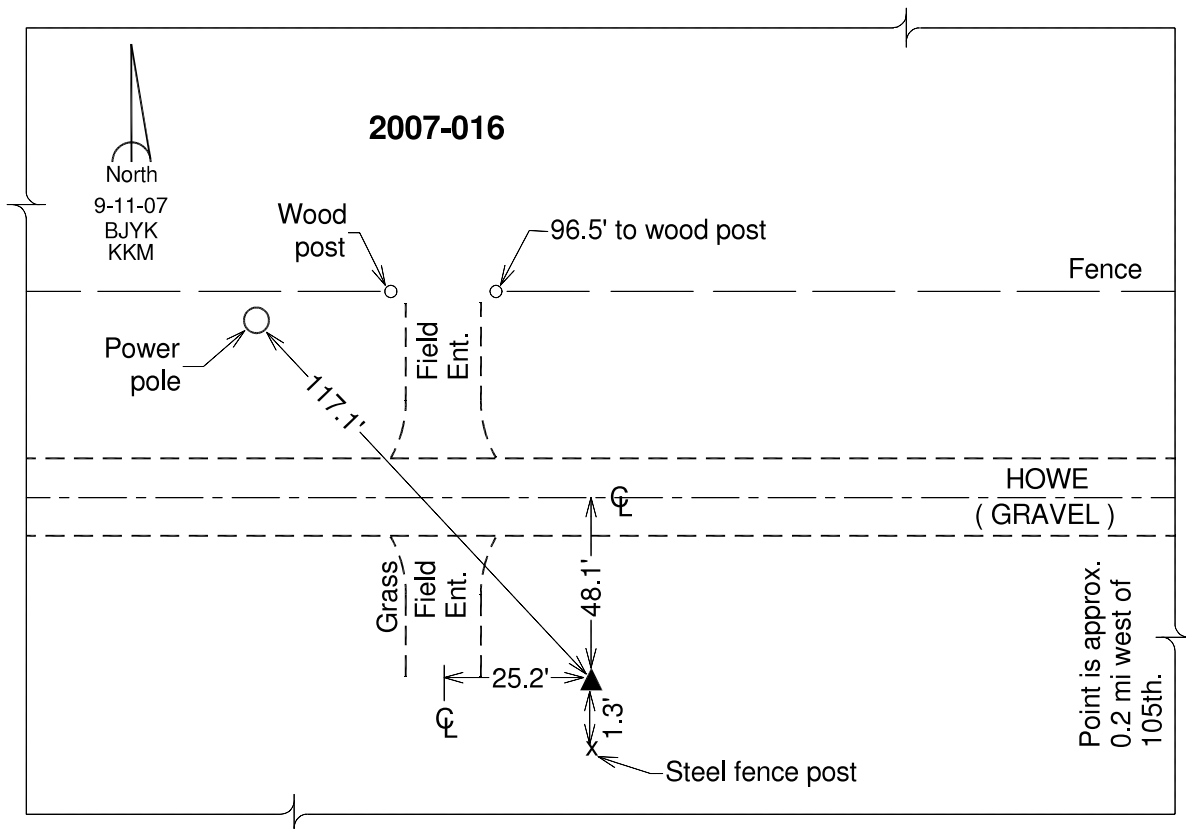
Northing: **248156.09**sft Easting: **1673935.13**sft

Orthometric Height: **1093.10**sft Ellipsoid Height: **989.50**sft **Geoid03**

Latitude: **40°40'51.82671"N** Longitude: **93°22'44.94127"W**

Mapping Angle: **0°04'47"** Combination Scale Factor: **0.99994204**

Monument Type: Berntsen 3/4" Top Security Rod Monument with a 2-1/2" dia. domed survey cap and permanent magnet encased in a white PVC pipe with a NGS style alum. access cover.



This document was prepared by DCI and GBC for use by Wayne County, Iowa.