

Wayne County, Iowa
 Iowa South Zone (1402)
 Horiz. Datum: NAD83(NSRS2007)
 Vert. Datum: NAVD 1988
 US Survey Feet
2007

Point Name: **17**

Designation: 2007-017 Wayne Co GPS Control Pt

Northing: **279866.25**sft Easting: **1672489.80**sft

Orthometric Height: **1078.72**sft Ellipsoid Height: **975.16**sft **Geoid03**

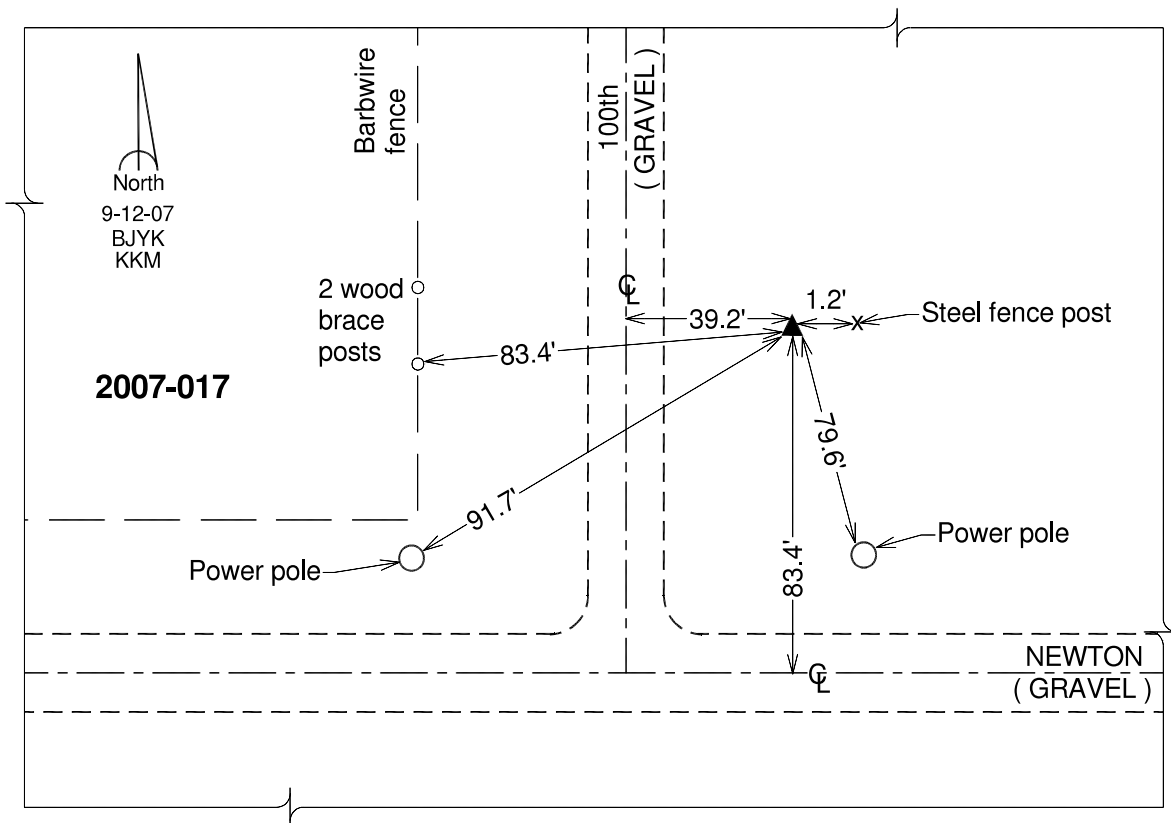
Latitude: **40°46'05.18251"N**

Longitude: **93°23'03.15331"W**

Mapping Angle: **0°04'35"**

Combination Scale Factor: **0.99993019**

Monument Type: Berntsen 3/4" Top Security Rod Monument with a 2-1/2" dia. domed survey cap and permanent magnet encased in a white PVC pipe with a NGS style alum. access cover.



This document was prepared by DCI and GBC for use by Wayne County, Iowa.