

**Wayne County, Iowa**  
Iowa South Zone (1402)  
Horiz. Datum: NAD83(NSRS2007)  
Vert. Datum: NAVD 1988  
US Survey Feet  
**2007**

Point Name: **18**

**Designation:** 2007-018 Wayne Co GPS Control Pt

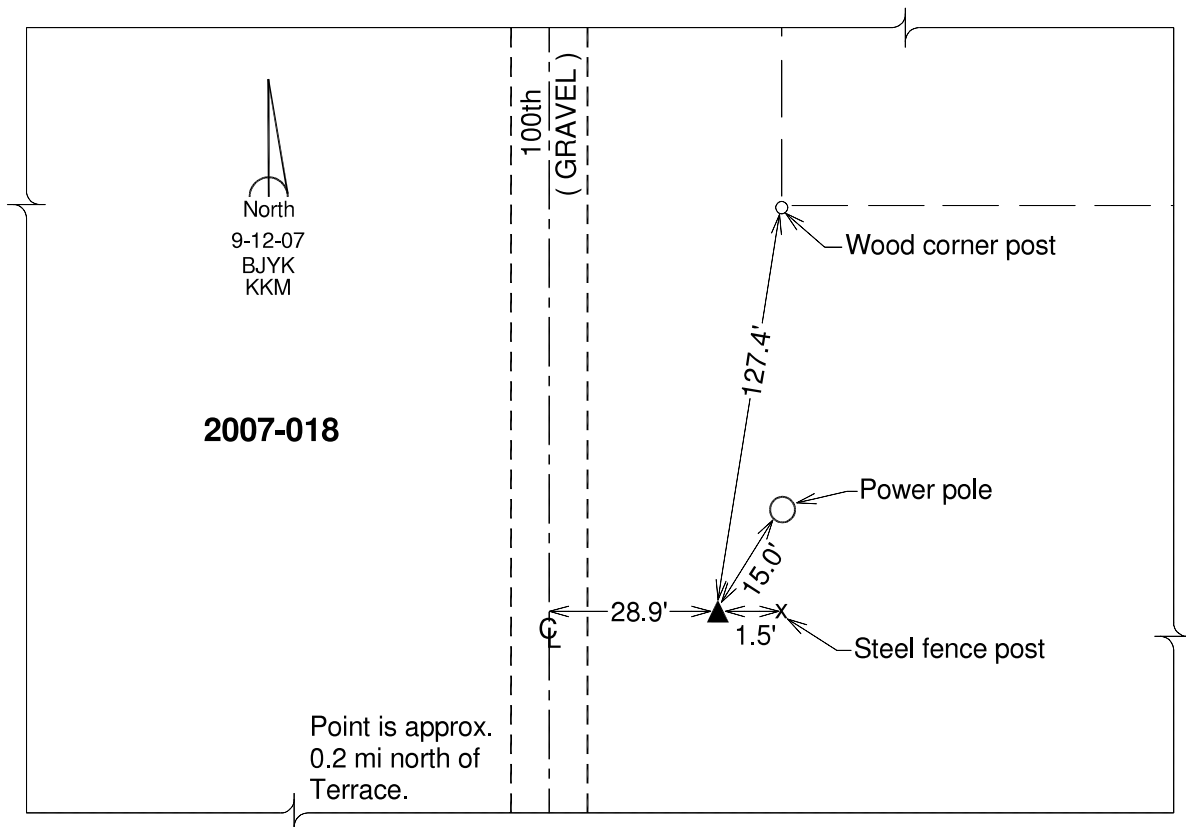
Northing: **312906.40**sft    Easting: **1672436.51**sft

Orthometric Height: **1092.63**sft    Ellipsoid Height: **989.34**sft    **Geoid03**

Latitude: **40°51'31.66027"N**                      Longitude: **93°23'03.27441"W**

Mapping Angle: **0°04'34"**                      Combination Scale Factor: **0.99991889**

**Monument Type:** Berntsen 3/4" Top Security Rod Monument with a 2-1/2" dia. domed survey cap and permanent magnet encased in a white PVC pipe with a NGS style alum. access cover.



*This document was prepared by DCI and GBC for use by Wayne County, Iowa.*