

Wayne County, Iowa
Iowa South Zone (1402)
Horiz. Datum: NAD83(NSRS2007)
Vert. Datum: NAVD 1988
US Survey Feet
2007

Point Name: **2**

Designation: 2007-002 Wayne Co GPS Control Pt

Northing: **235854.45**sft Easting: **1626255.74**sft

Orthometric Height: **1053.27**sft Ellipsoid Height: **949.79**sft **Geoid03**

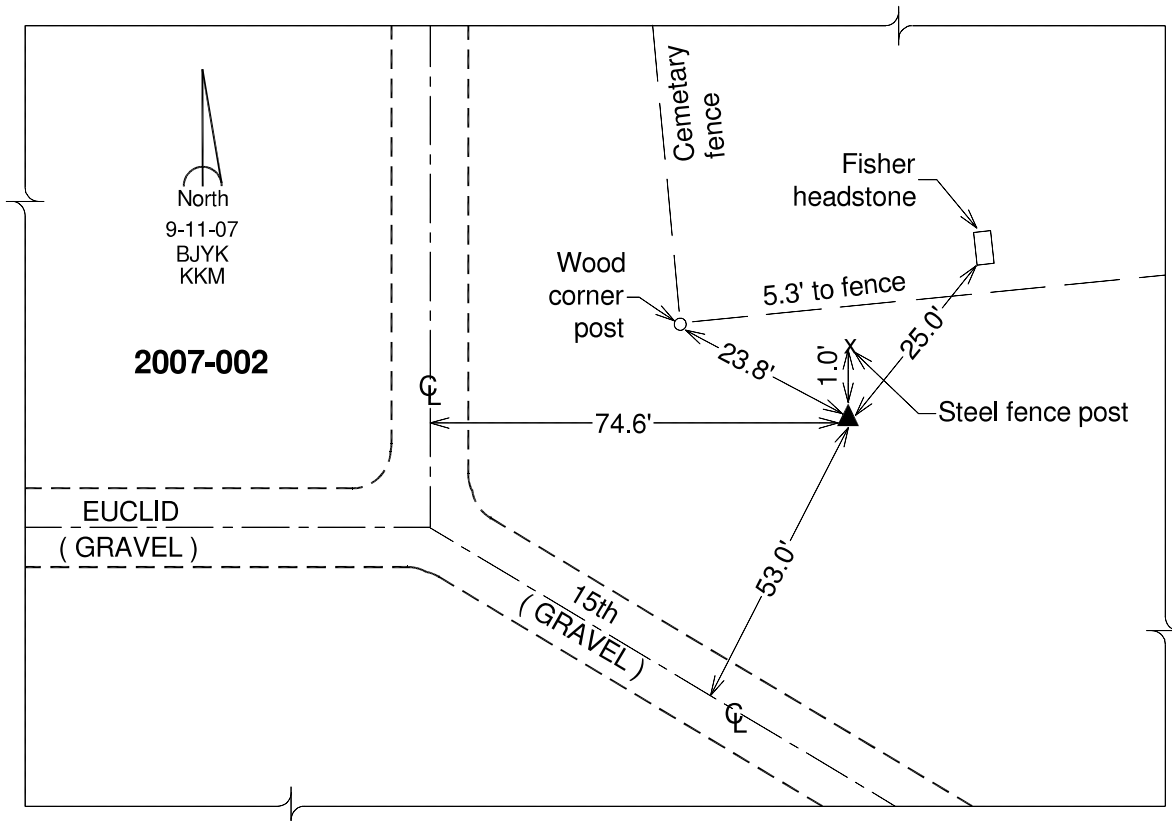
Latitude: **40°38'50.45978"N**

Longitude: **93°33'03.71062"W**

Mapping Angle: **-0°02'01"**

Combination Scale Factor: **0.99994940**

Monument Type: Berntsen 3/4" Top Security Rod Monument with a 2-1/2" dia. domed survey cap and permanent magnet encased in a white PVC pipe with a NGS style alum. access cover.



This document was prepared by DCI and GBC for use by Wayne County, Iowa.