

**Wayne County, Iowa**  
 Iowa South Zone (1402)  
 Horiz. Datum: NAD83(NSRS2007)  
 Vert. Datum: NAVD 1988  
 US Survey Feet  
**2007**

Point Name: **20**

**Designation:** 2007-020 Wayne Co GPS Control Pt

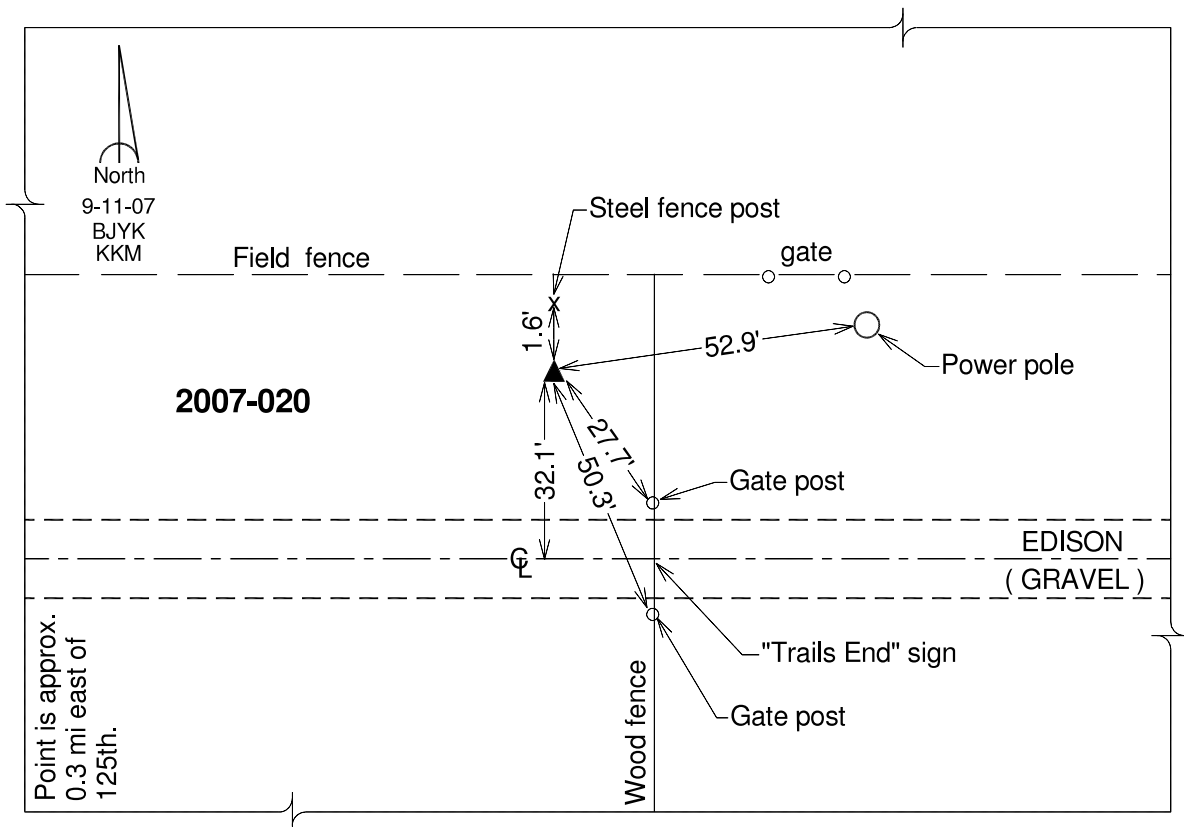
Northing: **232400.41**sft    Easting: **1687280.96**sft

Orthometric Height: **1061.16**sft    Ellipsoid Height: **957.48**sft    **Geoid03**

Latitude: **40°38'15.92100"N**                      Longitude: **93°19'52.11412"W**

Mapping Angle: **0°06'40"**                      Combination Scale Factor: **0.99995066**

**Monument Type:** Berntsen 3/4" Top Security Rod Monument with a 2-1/2" dia. domed survey cap and permanent magnet encased in a white PVC pipe with a NGS style alum. access cover.



*This document was prepared by DCI and GBC for use by Wayne County, Iowa.*