

Wayne County, Iowa
Iowa South Zone (1402)
Horiz. Datum: NAD83(NSRS2007)
Vert. Datum: NAVD 1988
US Survey Feet
2007

Point Name: **22**

Designation: 2007-022 Wayne Co GPS Control Pt

Northing: **293337.37**sft Easting: **1689878.38**sft

Orthometric Height: **1056.83**sft Ellipsoid Height: **953.32**sft **Geoid03**

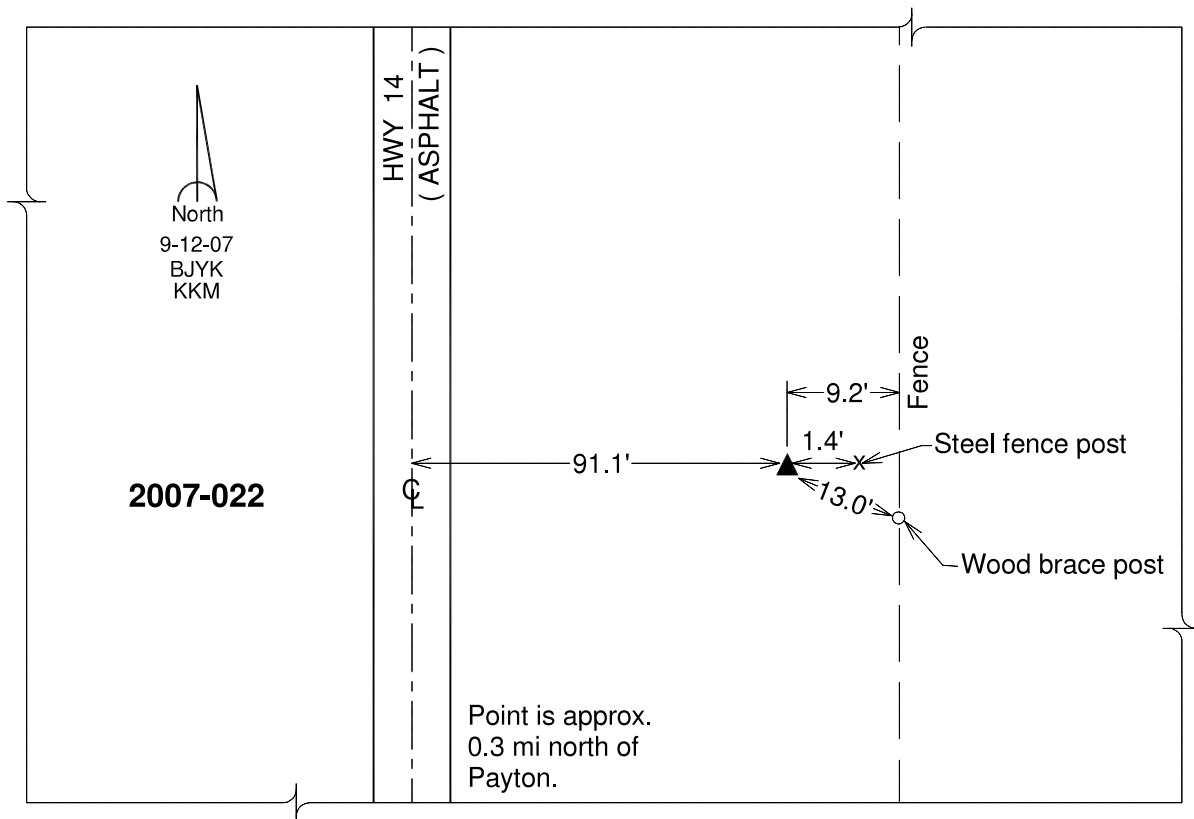
Latitude: **40°48'18.00297"N**

Longitude: **93°19'16.79899"W**

Mapping Angle: **0°07'04"**

Combination Scale Factor: **0.99992661**

Monument Type: Berntsen 3/4" Top Security Rod Monument with a 2-1/2" dia. domed survey cap and permanent magnet encased in a white PVC pipe with a NGS style alum. access cover.



This document was prepared by DCI and GBC for use by Wayne County, Iowa.