

Wayne County, Iowa
Iowa South Zone (1402)
Horiz. Datum: NAD83(NSRS2007)
Vert. Datum: NAVD 1988
US Survey Feet
2007

Point Name: **23**

Designation: 2007-023 Wayne Co GPS Control Pt

Northing: **326006.71**sft Easting: **1686910.00**sft

Orthometric Height: **1042.96**sft Ellipsoid Height: **939.73**sft **Geoid03**

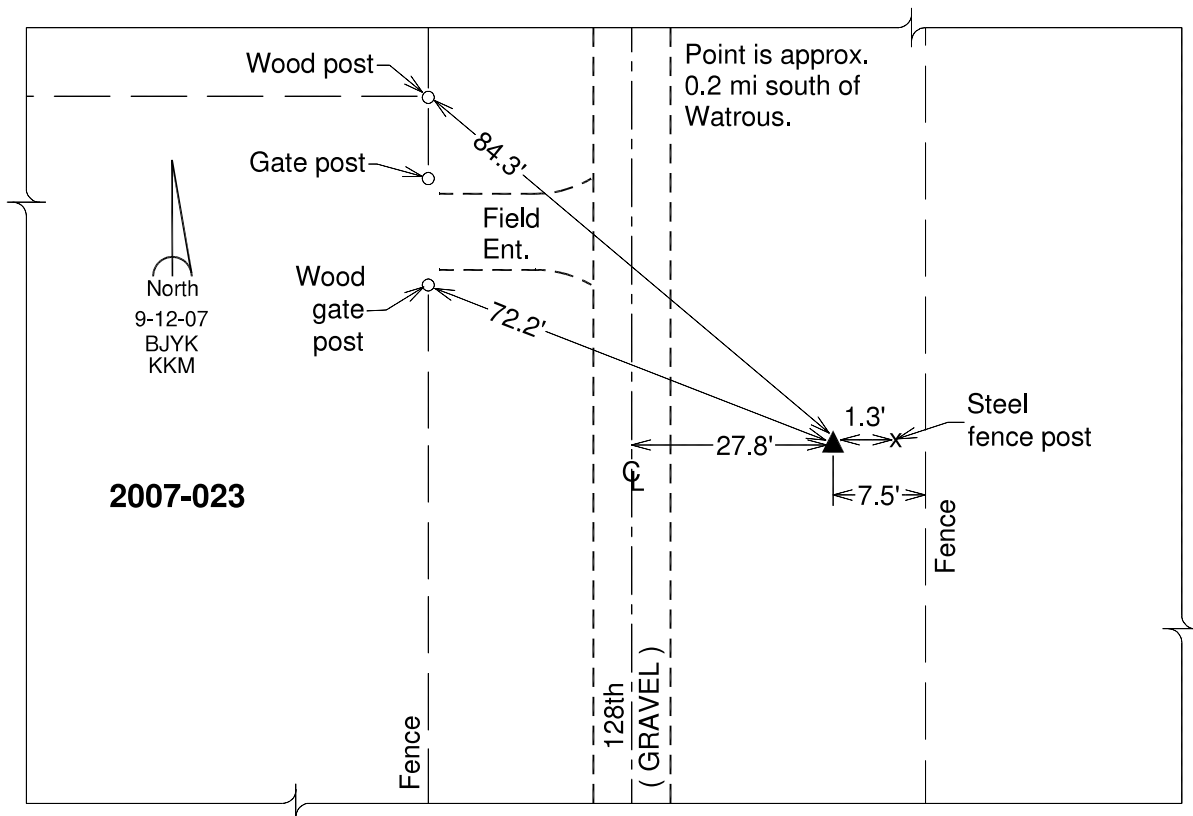
Latitude: **40°53'40.87339"N**

Longitude: **93°19'54.57839"W**

Mapping Angle: **0°06'39"**

Combination Scale Factor: **0.99991773**

Monument Type: Berntsen 3/4" Top Security Rod Monument with a 2-1/2" dia. domed survey cap and permanent magnet encased in a white PVC pipe with a NGS style alum. access cover.



This document was prepared by DCI and GBC for use by Wayne County, Iowa.