

Wayne County, Iowa
 Iowa South Zone (1402)
 Horiz. Datum: NAD83(NSRS2007)
 Vert. Datum: NAVD 1988
 US Survey Feet
2007

Point Name: **25**

Designation: 2007-025 Wayne Co GPS Control Pt

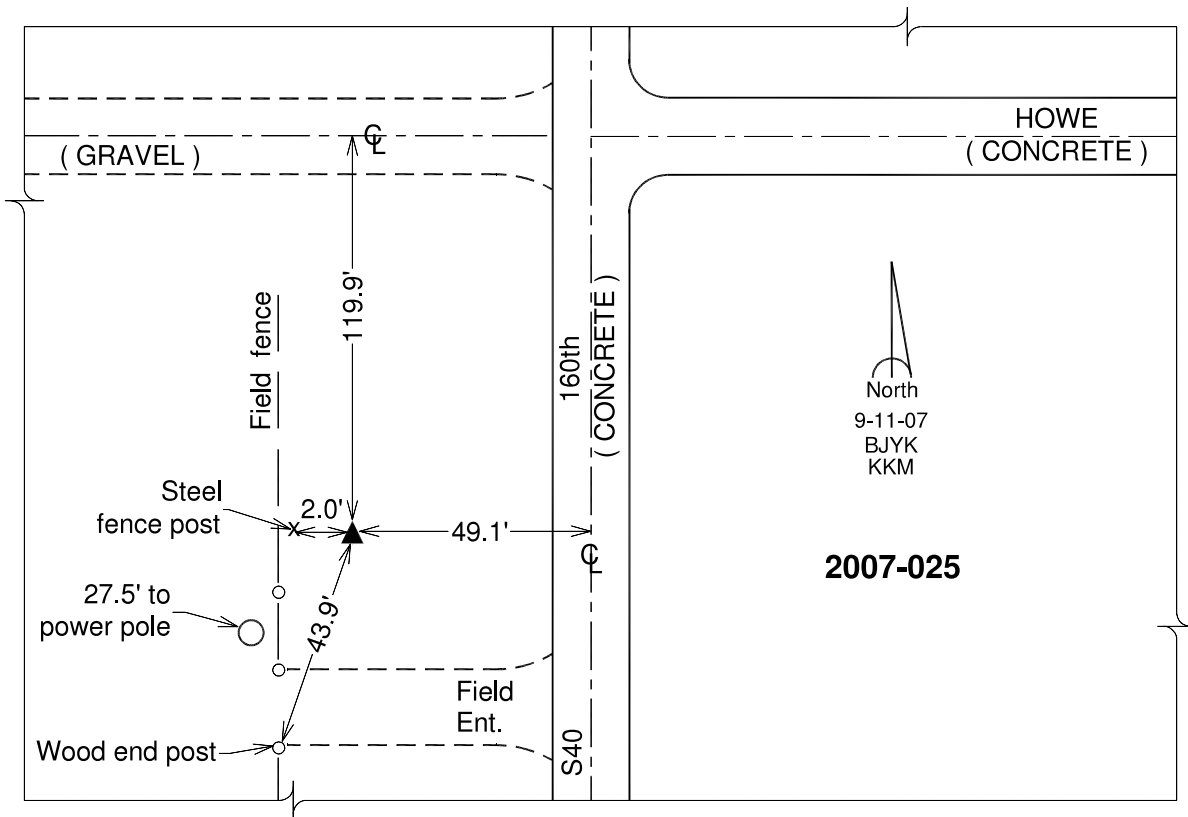
Northing: **248183.95**sft Easting: **1704339.73**sft

Orthometric Height: **1095.58**sft Ellipsoid Height: **991.89**sft **Geoid03**

Latitude: **40°40'51.49529"N** Longitude: **93°16'10.29997"W**

Mapping Angle: **0°09'07"** Combination Scale Factor: **0.99994194**

Monument Type: Berntsen 3/4" Top Security Rod Monument with a 2-1/2" dia. domed survey cap and permanent magnet encased in a white PVC pipe with a NGS style alum. access cover.



This document was prepared by DCI and GBC for use by Wayne County, Iowa.