

**Wayne County, Iowa**  
Iowa South Zone (1402)  
Horiz. Datum: NAD83(NSRS2007)  
Vert. Datum: NAVD 1988  
US Survey Feet  
**2007**

Point Name: **26**

**Designation:** 2007-026 Wayne Co GPS Control Pt

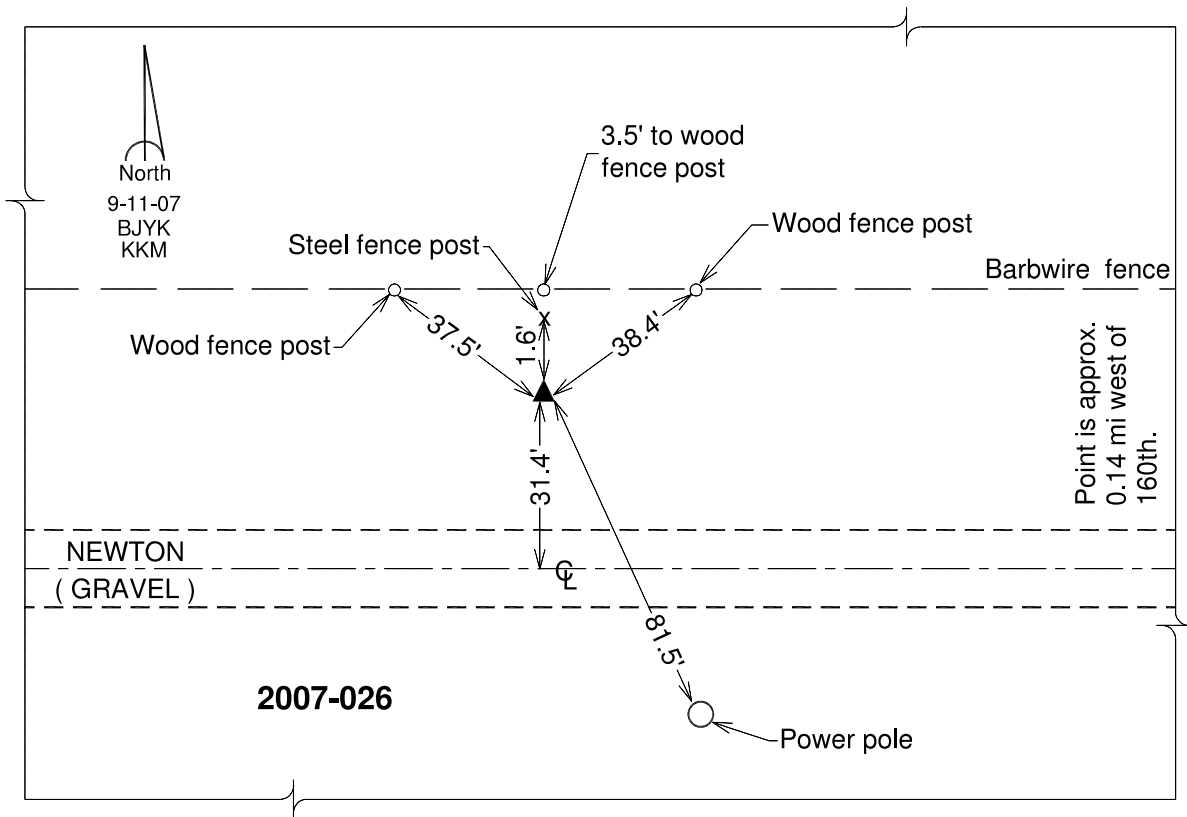
Northing: **279947.96**sft    Easting: **1703605.23**sft

Orthometric Height: **1073.89**sft    Ellipsoid Height: **970.27**sft    **Geoid03**

Latitude: **40°46'05.38210"N**                      Longitude: **93°16'18.75214"W**

Mapping Angle: **0°09'01"**                      Combination Scale Factor: **0.99993042**

**Monument Type:** Berntsen 3/4" Top Security Rod Monument with a 2-1/2" dia. domed survey cap and permanent magnet encased in a white PVC pipe with a NGS style alum. access cover.



*This document was prepared by DCI and GBC for use by Wayne County, Iowa.*