

**Wayne County, Iowa**  
Iowa South Zone (1402)  
Horiz. Datum: NAD83(NSRS2007)  
Vert. Datum: NAVD 1988  
US Survey Feet  
**2007**

Point Name: **27**

**Designation:** 2007-027 Wayne Co GPS Control Pt

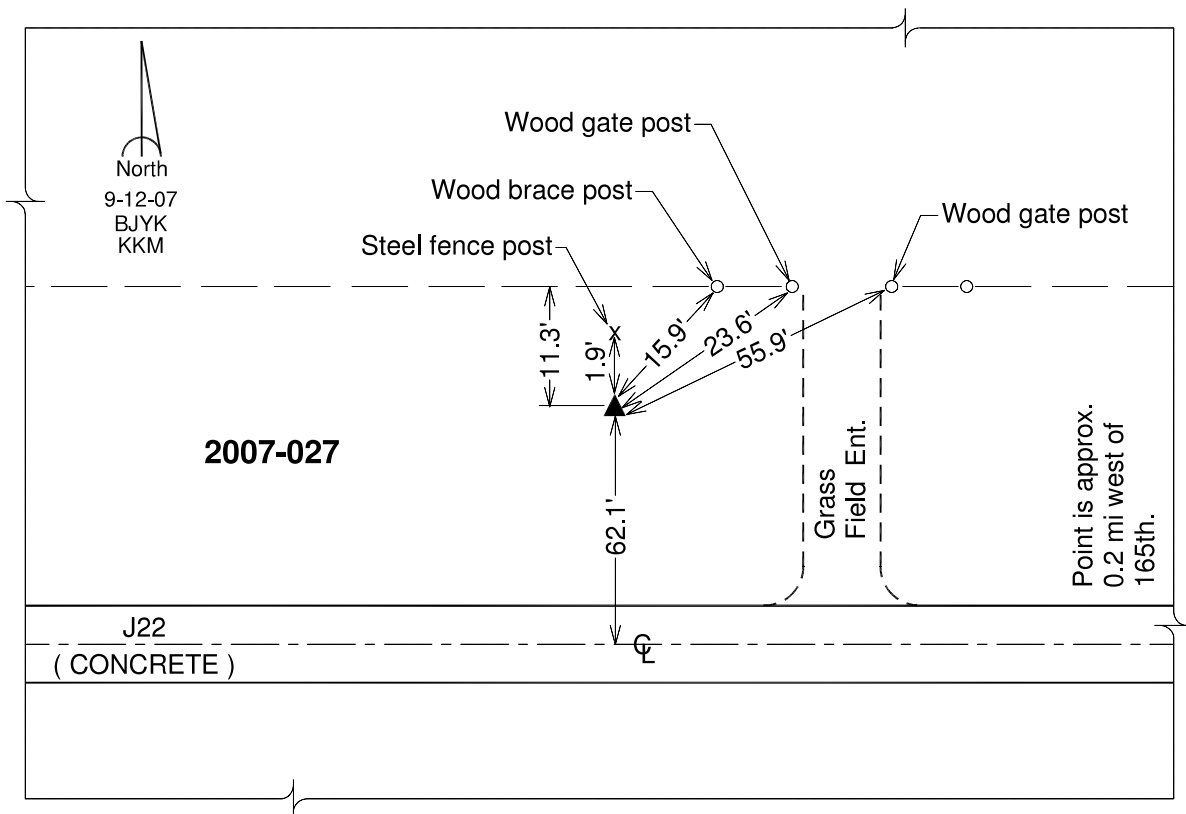
Northing: **310368.89**sft    Easting: **1705804.86**sft

Orthometric Height: **1031.77**sft    Ellipsoid Height: **928.31**sft    **Geoid03**

Latitude: **40°51'05.91925"N**    Longitude: **93°15'49.08985"W**

Mapping Angle: **0°09'20"**    Combination Scale Factor: **0.99992255**

**Monument Type:** Berntsen 3/4" Top Security Rod Monument with a 2-1/2" dia. domed survey cap and permanent magnet encased in a white PVC pipe with a NGS style alum. access cover.



*This document was prepared by DCI and GBC for use by Wayne County, Iowa.*