

Wayne County, Iowa
 Iowa South Zone (1402)
 Horiz. Datum: NAD83(NSRS2007)
 Vert. Datum: NAVD 1988
 US Survey Feet
2007

Point Name: **29**

Designation: 2007-029 Wayne Co GPS Control Pt

Northing: **232527.45**sft Easting: **1720381.72**sft

Orthometric Height: **1060.70**sft Ellipsoid Height: **956.87**sft **Geoid03**

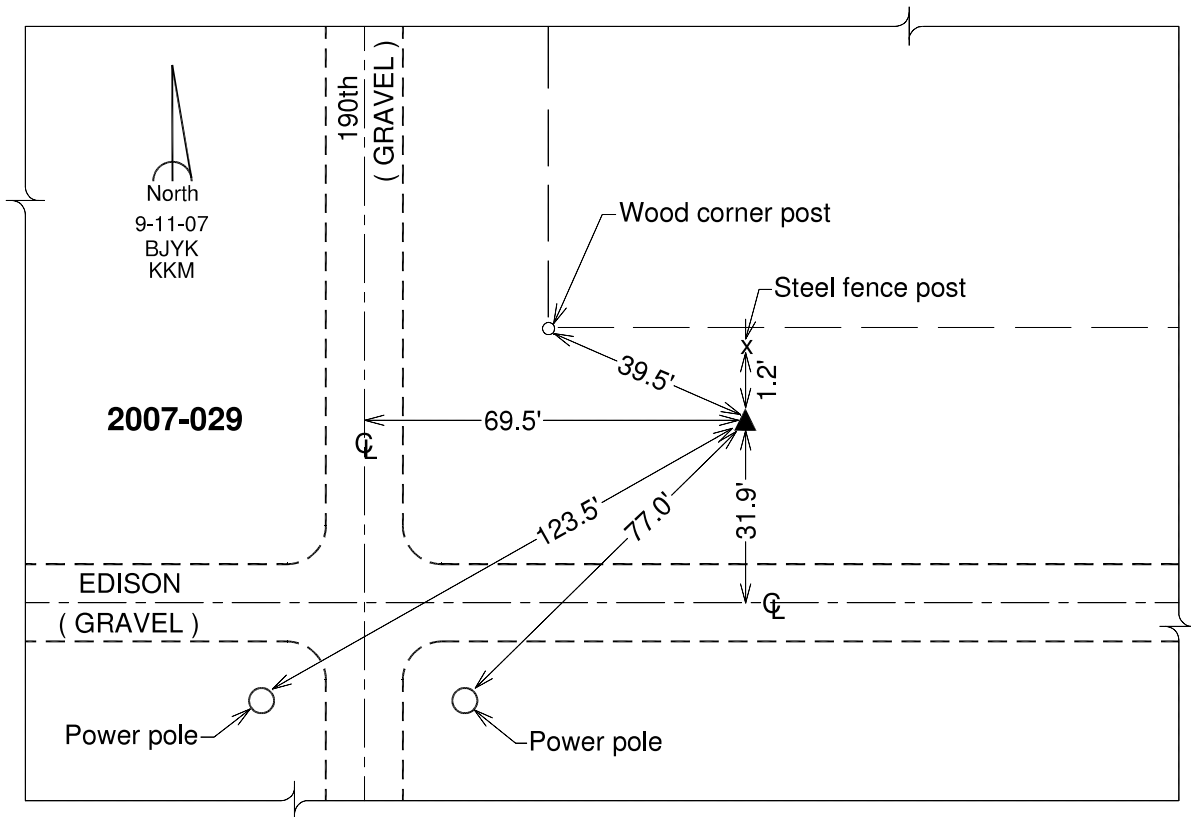
Latitude: **40°38'16.31715"N**

Longitude: **93°12'42.75469"W**

Mapping Angle: **0°11'23"**

Combination Scale Factor: **0.99995067**

Monument Type: Berntsen 3/4" Top Security Rod Monument with a 2-1/2" dia. domed survey cap and permanent magnet encased in a white PVC pipe with a NGS style alum. access cover.



This document was prepared by DCI and GBC for use by Wayne County, Iowa.